

Document Appendix



Appendix Contents:

- Appendix A: Individual Trail Segment Alignments
- Appendix B: Field Inventory Summaries
- Appendix C: Meeting Agendas and Minutes





2021 Trail Feasibility Study

Appendix A: Individual Trail Segment Alignments

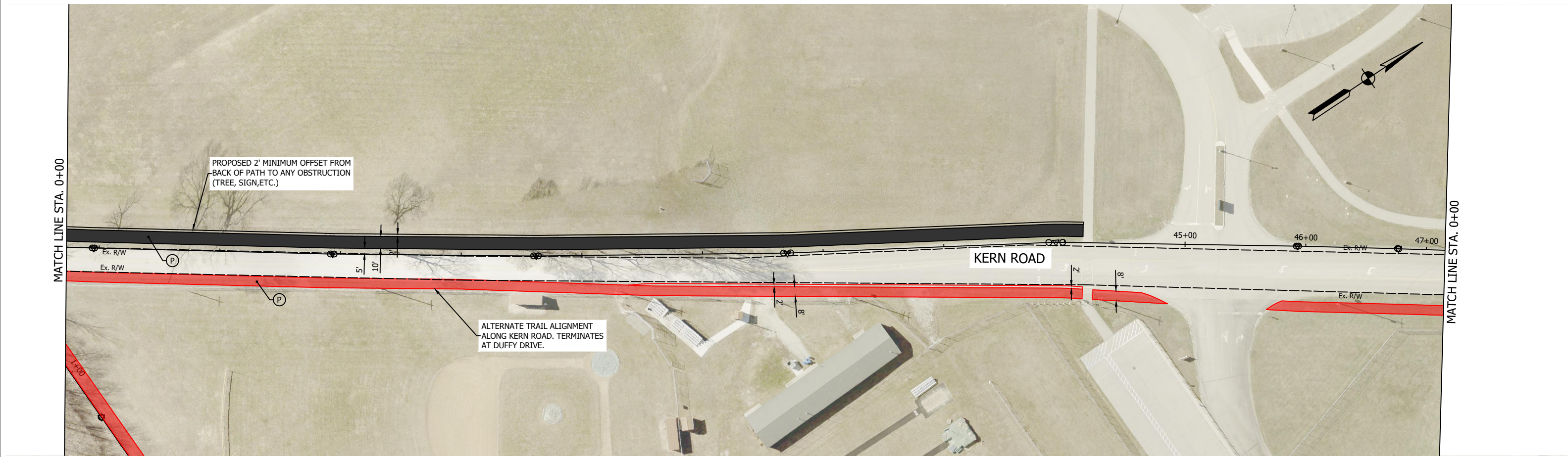


2021 Trail Feasibility Study

Appendix A1:

Trail Section 1 - Segment 1:

Kern Rd. between CR 1300 N. and CR 1200 N.





(P) SHARED USE PATH - HMA

NOT FOR CONSTRUCTION

DESIGNED: WAH	DRAWN: WAH
CHECKED: GRW	CHECKED: GRW

SYRACUSE-WAWASEE TRAILS	
CONCEPTUAL ALIGNMENTS SECTION 1 - KERN ROAD	

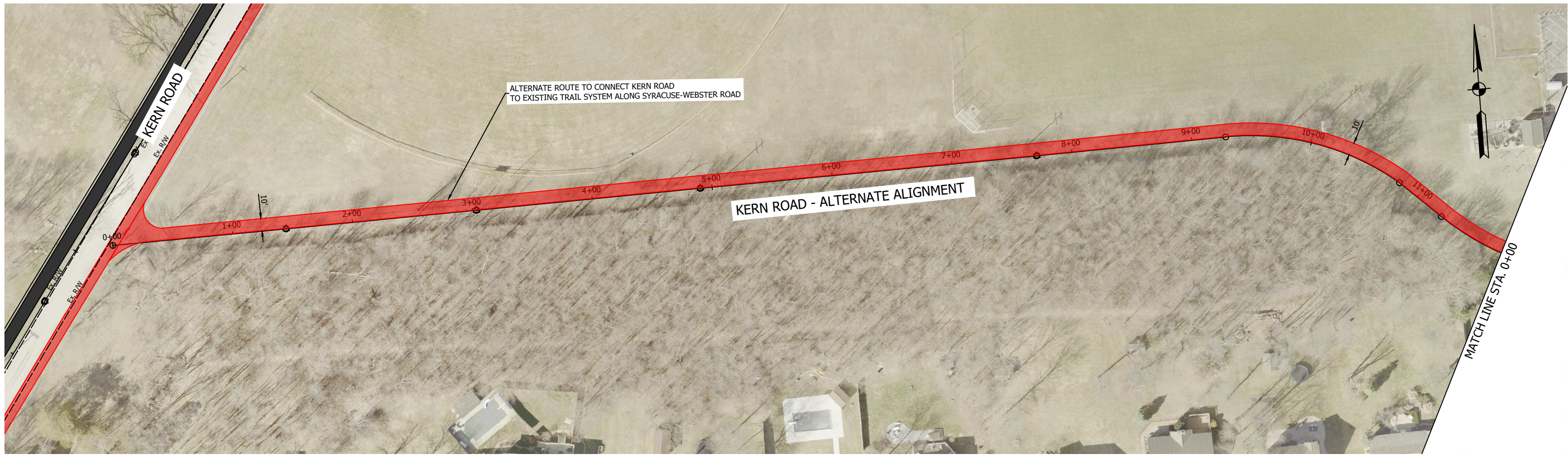
HORIZONTAL SCALE 1" = 20'	BRIDGE FILE
VERTICAL SCALE ----	DESIGNATION

SURVEY BOOK	SHEETS
	1 of ----
CONTRACT	PROJECT
	2020-0044

Appendix A2:

Trail Section 1 - Segment 1a:

Kern Rd. Alt. - CR 1300 N. to Syracuse-Webster Rd.



<div><div><div></div><div></div></div><div>SHARED USE PATH - HMA</div></div>	<div>NOT FOR CONSTRUCTION</div>			SYRACUSE-WAWASEE TRAILS		HORIZONTAL SCALE	BRIDGE FILE		
						1" = 20'	DESIGNATION		
						VERTICAL SCALE	----		
						----	----		
		DESIGNED: WAH		DRAWN: WAH		SURVEY BOOK		SHEETS	
								1 of ----	
		CHECKED: GRW		CHECKED: GRW		CONTRACT		PROJECT	
								2020-0044	

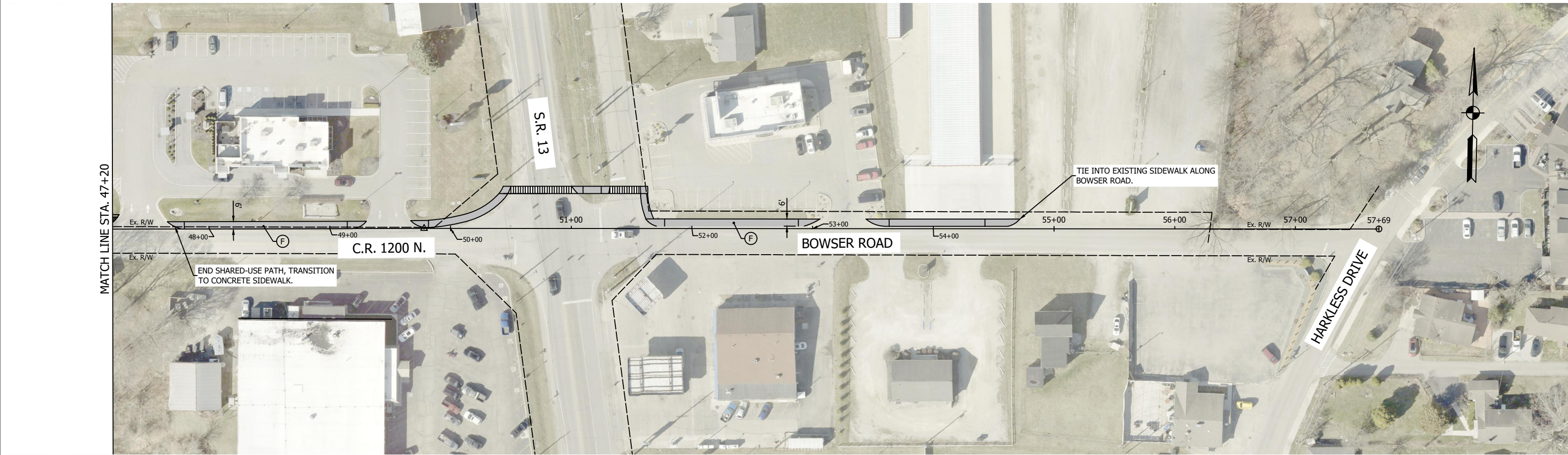
Appendix A3:

Trail Section 1 - Segment 2:

CR 1200 N. from Kern Rd. to Harkless Dr.



<div><div><div></div><div></div></div><div>SHARED USE PATH - HMA</div></div>	<div>NOT FOR CONSTRUCTION</div>			SYRACUSE-WAWASEE TRAILS		HORIZONTAL SCALE 1" = 20'		BRIDGE FILE	
						VERTICAL SCALE ----		DESIGNATION ----	
						SURVEY BOOK		SHEETS	
						CONTRACT		PROJECT	
				DESIGNED: WAH		DRAWN: WAH		2 of ----	
				CHECKED: GRW		CHECKED: GRW		2020-0044	



Ⓟ

SHARED USE PATH - HMA

Ⓣ

SIDEWALK, CONCRETE

NOT FOR
CONSTRUCTION

DESIGNED: WAH

CHECKED: GRW

DRAWN: WAH

CHECKED: GRW

SYRACUSE-WAWASEE
TRAILS

CONCEPTUAL ALIGNMENTS
SECTION 1 - C.R. 1200 N.

HORIZONTAL SCALE
1" = 20'

VERTICAL SCALE

BRIDGE FILE

DESIGNATION

SURVEY BOOK

CONTRACT

SHEETS
3 of ----

PROJECT
2020-0044

Appendix A4:

Trail Section 1 - Segment 3:

Syracuse-Webster Rd. from the existing trail to CR 1200 N.



(P) SHARED USE PATH - HMA

NOT FOR
CONSTRUCTION

DESIGNED: <u> </u> WAH	DRAWN: <u> </u> WAH
CHECKED: <u> </u> GRW	CHECKED: <u> </u> GRW

SYRACUSE-WAWASEE
TRAILS

CONCEPTUAL ALIGNMENTS
SECTION 1 - SYRACUSE-WEBSTER ROAD

HORIZONTAL SCALE 1" = 20'	BRIDGE FILE
VERTICAL SCALE ----	DESIGNATION ----
SURVEY BOOK	SHEETS
	1 of ----
CONTRACT	PROJECT 2020-0044

Appendix A5:

Trail Section 1 - Segment 4:

W. Chicago St. between Syracuse Webster Rd. and SR 13.

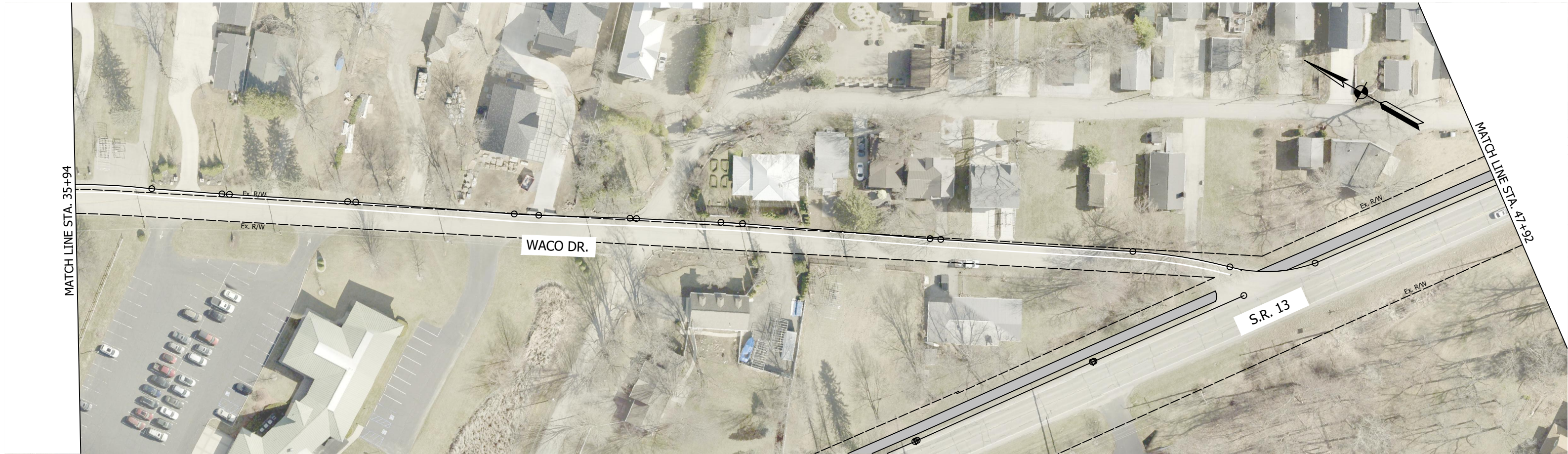


<div><div>F</div><div>SIDEWALK, CONCRETE</div></div>	<div>NOT FOR CONSTRUCTION</div>			SYRACUSE-WAWASEE TRAILS		<div>HORIZONTAL SCALE</div> <div>1" = 20'</div> <div>VERTICAL SCALE</div> <div>----</div>	<div>BRIDGE FILE</div> <div>DESIGNATION</div> <div>----</div>
		DESIGNED: <div>WAH</div>		DRAWN: <div>WAH</div>		<div>SURVEY BOOK</div> <div>1 of ----</div>	
		CHECKED: <div>GRW</div>		CHECKED: <div>GRW</div>		<div>CONTRACT</div> <div>PROJECT</div> <div>2020-0044</div>	
		CONCEPTUAL ALIGNMENTS SECTION 1 - CHICAGO STREET					

Appendix A6:

Trail Section 2 - Segment 1:

SR 13 & Waco Dr. from Grandview Dr. to SR 13



NOT FOR CONSTRUCTION		SYRACUSE-WAWASEE TRAILS		HORIZONTAL SCALE 1" = 40'		BRIDGE FILE	
		CONCEPTUAL ALIGNMENTS SECTION 2 - WACO DR		VERTICAL SCALE ----		DESIGNATION ----	
		DESIGNED: WAH	DRAWN: WAH	SURVEY BOOK		SHEETS	
		CHECKED: GRW	CHECKED: GRW	CONTRACT		8 of 18	PROJECT
						2020-0044	

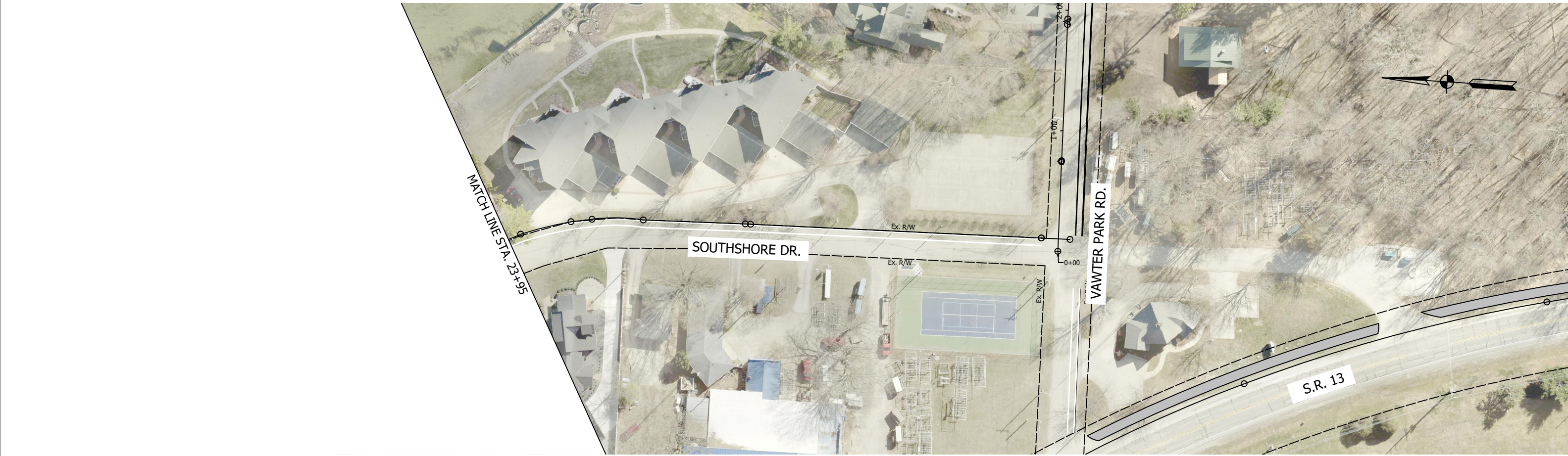
Appendix A7:

Trail Section 2 - Segment 2:

SR 13 & Southshore Dr. From Waco Dr. to Vawter Park Rd.



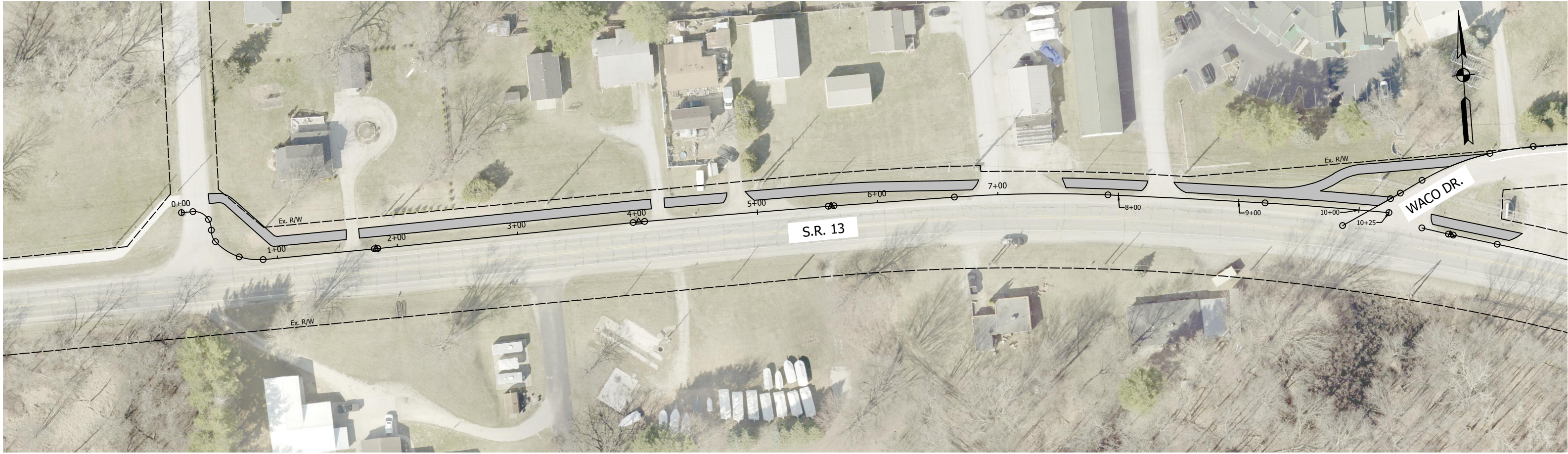
	NOT FOR CONSTRUCTION			SYRACUSE-WAWASEE TRAILS		HORIZONTAL SCALE		BRIDGE FILE	
						1" = 40'			
						VERTICAL SCALE		DESIGNATION	
						----		----	
						SURVEY BOOK		SHEETS	
								9 of 18	
		DESIGNED: WAH		DRAWN: WAH		CONTRACT		PROJECT	
		CHECKED: GRW		CHECKED: GRW				2020-0044	
				CONCEPTUAL ALIGNMENTS SECTION 2 - SOUTHSHORE DR					



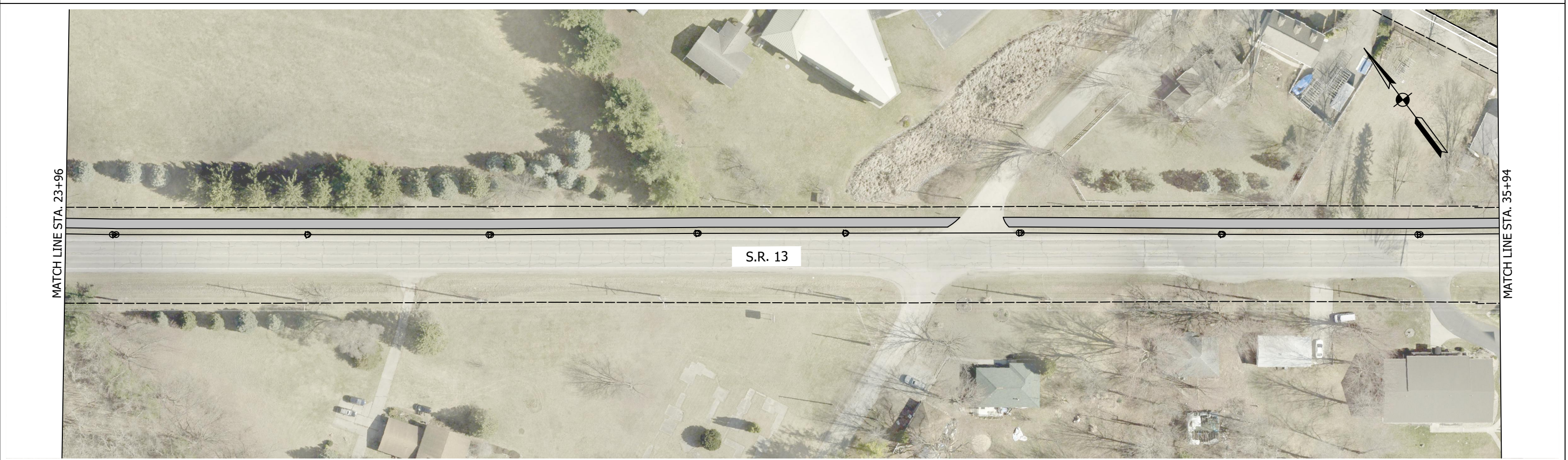
Appendix A8:

Trail Section 2 - Segment 1&2a:

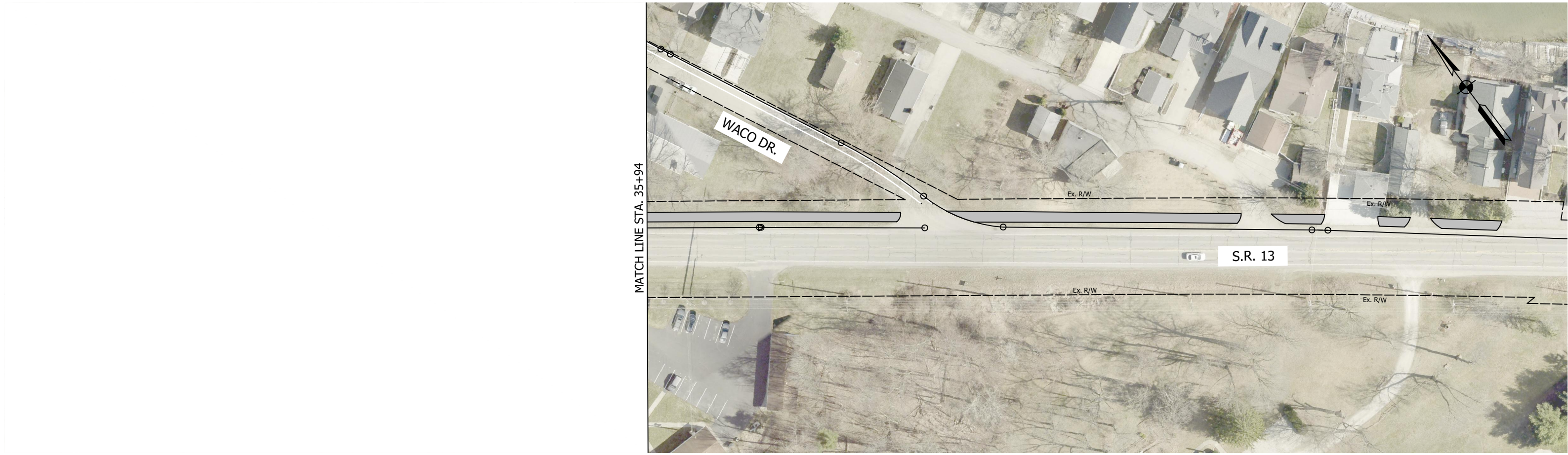
SR 13 Alternate Between Grandview Dr. and CR 1000 N.



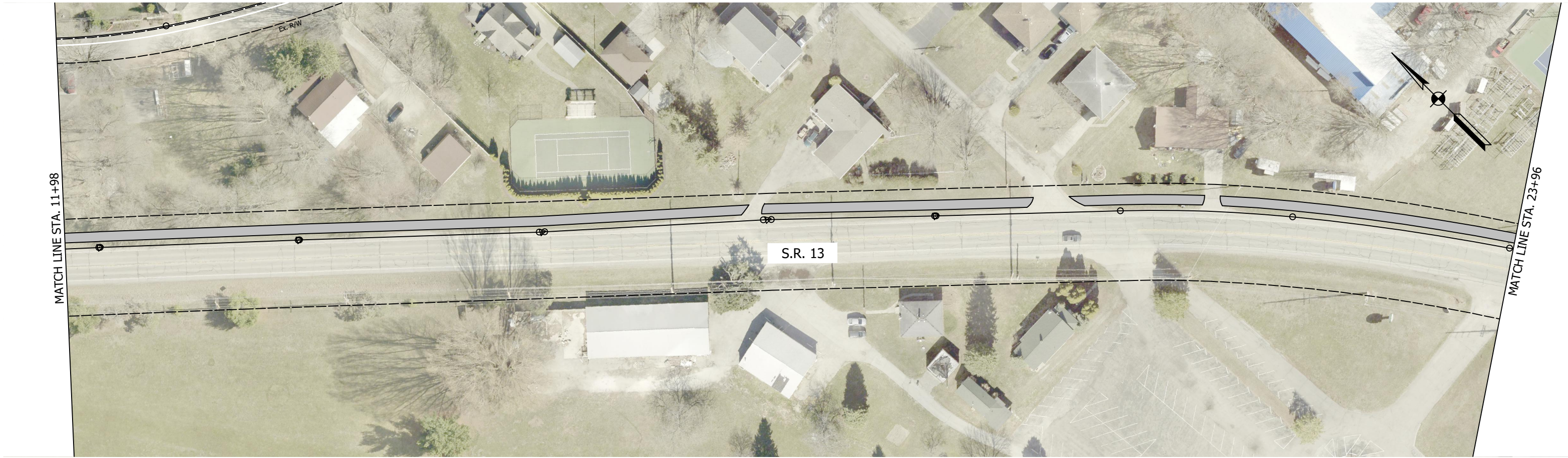
		NOT FOR CONSTRUCTION		SYRACUSE-WAWASEE TRAILS		CONCEPTUAL ALIGNMENTS SECTION 2 - GRANDVIEW CONNECTION		HORIZONTAL SCALE		BRIDGE FILE	
								1" = 40'		DESIGNATION	
								VERTICAL SCALE		SHEETS	
								----		1 of 18	
DESIGNED: WAH		DRAWN: WAH		SURVEY BOOK		CONTRACT		PROJECT		2020-0044	
CHECKED: GRW		CHECKED: GRW									



	NOT FOR CONSTRUCTION			SYRACUSE-WAWASEE TRAILS	HORIZONTAL SCALE		BRIDGE FILE	
					1" = 40'		DESIGNATION	
					VERTICAL SCALE		----	
					----		----	
		DESIGNED: WAH	DRAWN: WAH	CONCEPTUAL ALIGNMENTS SECTION 2 - SR 13	SURVEY BOOK		SHEETS	
		CHECKED: GRW	CHECKED: GRW		2 of 18		PROJECT	
					CONTRACT		2020-0044	



	NOT FOR CONSTRUCTION			SYRACUSE-WAWASEE TRAILS		HORIZONTAL SCALE		BRIDGE FILE			
						1" = 40'					
						VERTICAL SCALE		DESIGNATION			
						----		----			
		DESIGNED: WAH		DRAWN: WAH		CONCEPTUAL ALIGNMENTS SECTION 2 - SR 13		SURVEY BOOK		SHEETS	
				3				of		18	
		CHECKED: GRW		CHECKED: GRW		CONTRACT		PROJECT		2020-0044	



NOT FOR CONSTRUCTION		SYRACUSE-WAWASEE TRAILS		HORIZONTAL SCALE 1" = 40'		BRIDGE FILE	
				VERTICAL SCALE ----		DESIGNATION ----	
		CONCEPTUAL ALIGNMENTS SECTION 2 - SR 13		SURVEY BOOK		SHEETS	
				CONTRACT		4	of 18
DESIGNED: WAH		DRAWN: WAH		PROJECT		2020-0044	
CHECKED: GRW		CHECKED: GRW					



	NOT FOR CONSTRUCTION			SYRACUSE-WAWASEE TRAILS		HORIZONTAL SCALE		BRIDGE FILE			
						1" = 40'		DESIGNATION			
						VERTICAL SCALE		----			
		DESIGNED: _____ WAH		DRAWN: _____ WAH		CONCEPTUAL ALIGNMENTS SECTION 2 - SR 13		SURVEY BOOK		SHEETS	
		CHECKED: _____ GRW		CHECKED: _____ GRW				5 of 18			
								PROJECT			
				CONTRACT		2020-0044					



NOT FOR
CONSTRUCTION

DESIGNED: _____ WAH		DRAWN: _____ WAH	
CHECKED: _____ GRW		CHECKED: _____ GRW	

SYRACUSE-WAWASEE
TRAILS

CONCEPTUAL ALIGNMENTS
SECTION 2 - SR 13

HORIZONTAL SCALE 1" = 40'	BRIDGE FILE		
VERTICAL SCALE ----	DESIGNATION ----		
SURVEY BOOK	SHEETS		
	6	of	18
CONTRACT	PROJECT		
	2020-0044		

Appendix A9:

Trail Section 2 - Segment 3:

Vawter Park Rd. between Southshore DR. and CR 800 E.



NOT FOR CONSTRUCTION		SYRACUSE-WAWASEE TRAILS		HORIZONTAL SCALE 1" = 40'		BRIDGE FILE	
		CONCEPTUAL ALIGNMENTS SECTION 2 - VAWTER PARK DR		VERTICAL SCALE ----		DESIGNATION ----	
		DESIGNED: WAH	DRAWN: WAH	SURVEY BOOK		SHEETS	
		CHECKED: GRW	CHECKED: GRW	CONTRACT		11 of 18	PROJECT
						2020-0044	



	NOT FOR CONSTRUCTION			SYRACUSE-WAWASEE TRAILS		HORIZONTAL SCALE		BRIDGE FILE			
						1" = 40'					
						VERTICAL SCALE		DESIGNATION			
						----		----			
		DESIGNED: _____ WAH		DRAWN: _____ WAH		CONCEPTUAL ALIGNMENTS SECTION 2 - CR 800 E		SURVEY BOOK		SHEETS	
		CHECKED: _____ GRW		CHECKED: _____ GRW				12 of 18		PROJECT	
						CONTRACT		2020-0044			

Appendix A10:

Trail Section 2 - Segment 4:

CR 800 E. & McClintic Rd. Between Vawter Park Rd. and Hatchery Rd.



	NOT FOR CONSTRUCTION			SYRACUSE-WAWASEE TRAILS		HORIZONTAL SCALE		BRIDGE FILE			
						1" = 40'					
						VERTICAL SCALE		DESIGNATION			
				----				----			
		DESIGNED: _____ WAH		DRAWN: _____ WAH		CONCEPTUAL ALIGNMENTS SECTION 2 - CR 800 E		SURVEY BOOK		SHEETS	
		CHECKED: _____ GRW		CHECKED: _____ GRW						13 of 18	
				CONTRACT		PROJECT					
						2020-0044					



	NOT FOR CONSTRUCTION			SYRACUSE-WAWASEE TRAILS		HORIZONTAL SCALE 1" = 40'		BRIDGE FILE	
						VERTICAL SCALE ----		DESIGNATION ----	
		DESIGNED: _____ WAH		DRAWN: _____ WAH		SURVEY BOOK		SHEETS	
		CHECKED: _____ GRW		CHECKED: _____ GRW		CONTRACT		PROJECT	
						2020-0044			

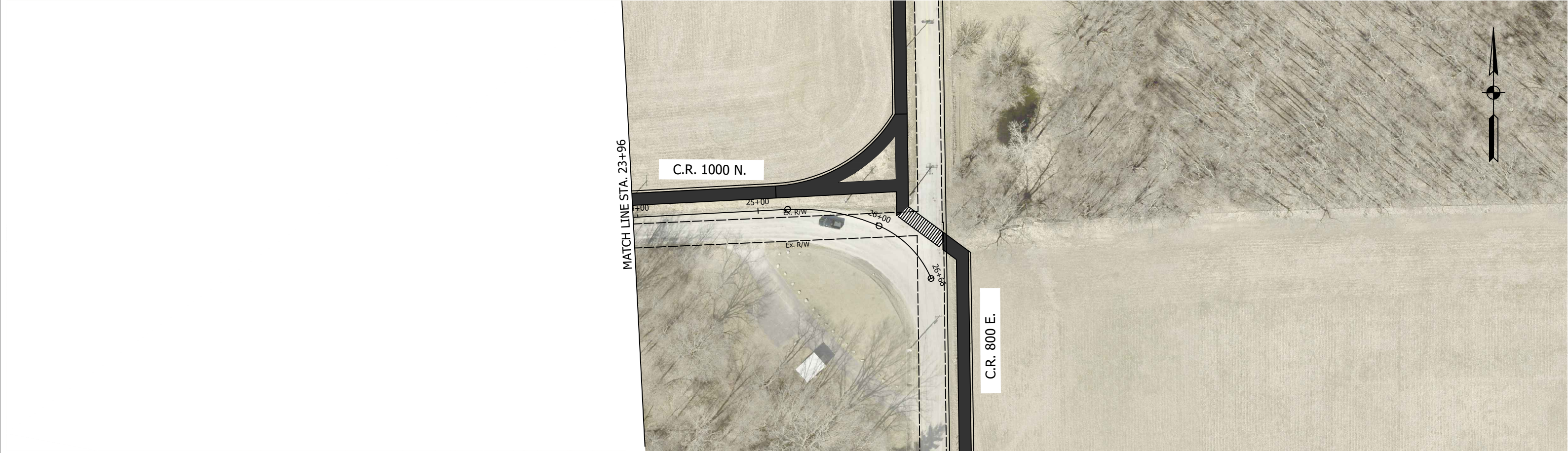
Appendix A11:

Trail Section 2 - Segment 5:

CR 1000 N. Between SR 13 and CR 800 E.



		NOT FOR CONSTRUCTION		SYRACUSE-WAWASEE TRAILS		HORIZONTAL SCALE		BRIDGE FILE	
						1" = 40'		DESIGNATION	
						VERTICAL SCALE		SHEETS	
						----		-----	
CONCEPTUAL ALIGNMENTS SECTION 2 - CR 1000 N		DESIGNED: WAH		DRAWN: WAH		SURVEY BOOK		PROJECT	
		CHECKED: GRW		CHECKED: GRW		CONTRACT		2020-0044	
								17 of 18	

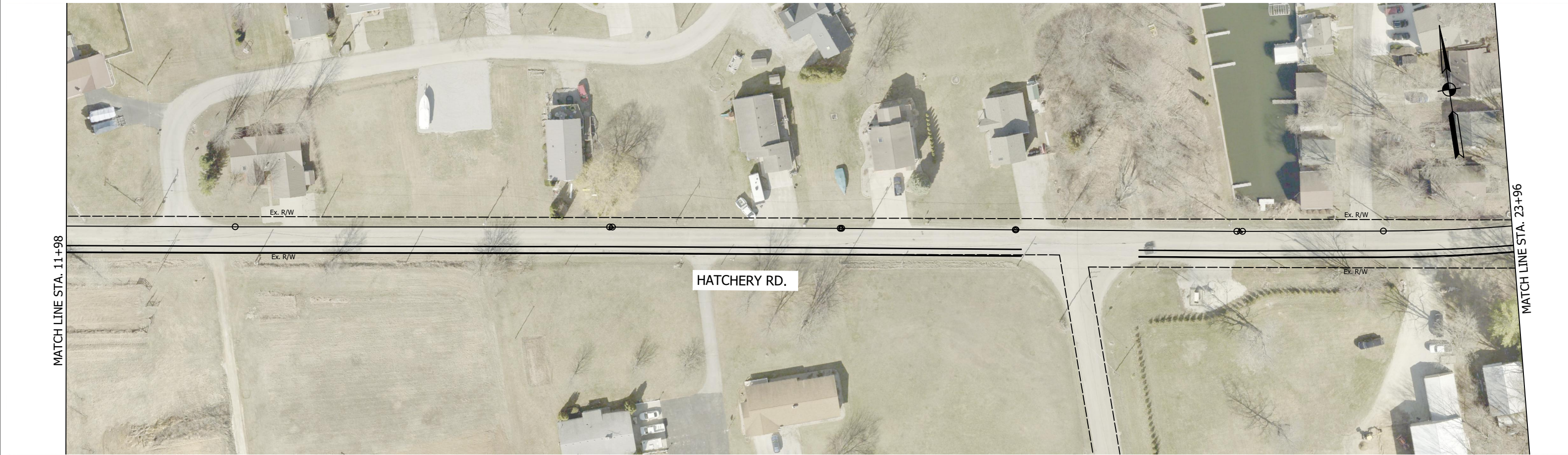


	NOT FOR CONSTRUCTION			SYRACUSE-WAWASEE TRAILS		HORIZONTAL SCALE		BRIDGE FILE		
						1" = 40'		DESIGNATION		
						VERTICAL SCALE		----		
						----		----		
		DESIGNED: WAH	DRAWN: WAH	CONCEPTUAL ALIGNMENTS SECTION 2 - CR 1000 N		SURVEY BOOK		SHEETS		
		CHECKED: GRW	CHECKED: GRW			18 of 18				
						CONTRACT		PROJECT		
								2020-0044		

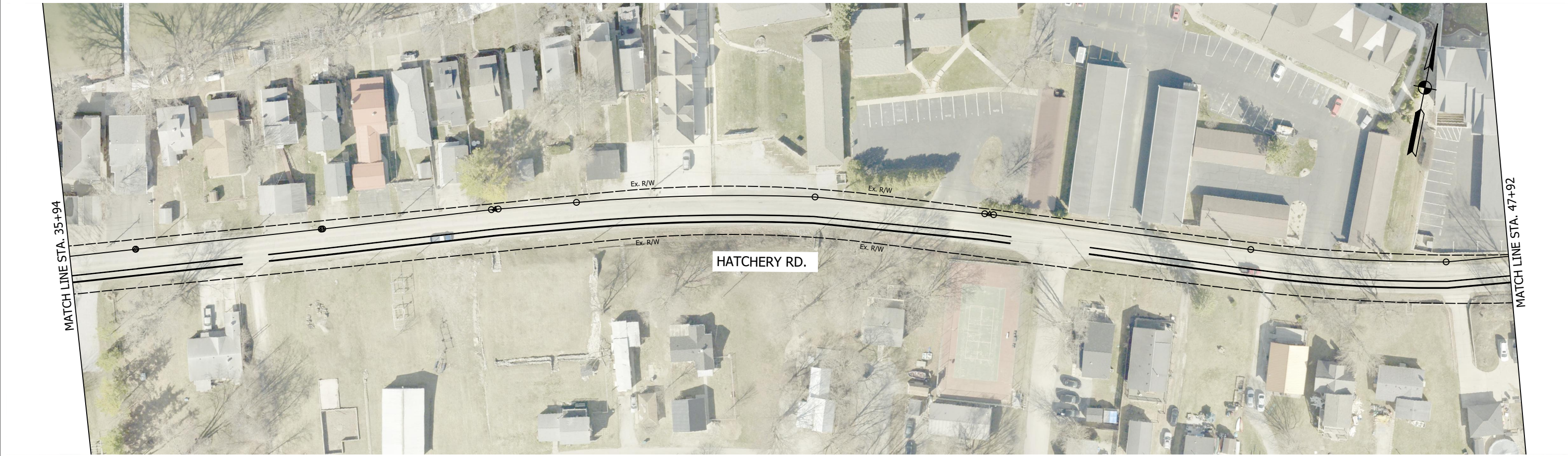
Appendix A12:

Trail Section 2 - Segment 6:

Hatchery Rd. from McClintic Rd. to Hiawatha Ln.



	NOT FOR CONSTRUCTION			SYRACUSE-WAWASEE TRAILS		HORIZONTAL SCALE 1" = 40'		BRIDGE FILE	
						VERTICAL SCALE ----		DESIGNATION ----	
		DESIGNED: WAH		DRAWN: WAH		SURVEY BOOK		SHEETS	
		CHECKED: GRW		CHECKED: GRW		CONTRACT		15 of 18 PROJECT 2020-0044	
				CONCEPTUAL ALIGNMENTS SECTION 2 - HATCHERY RD					

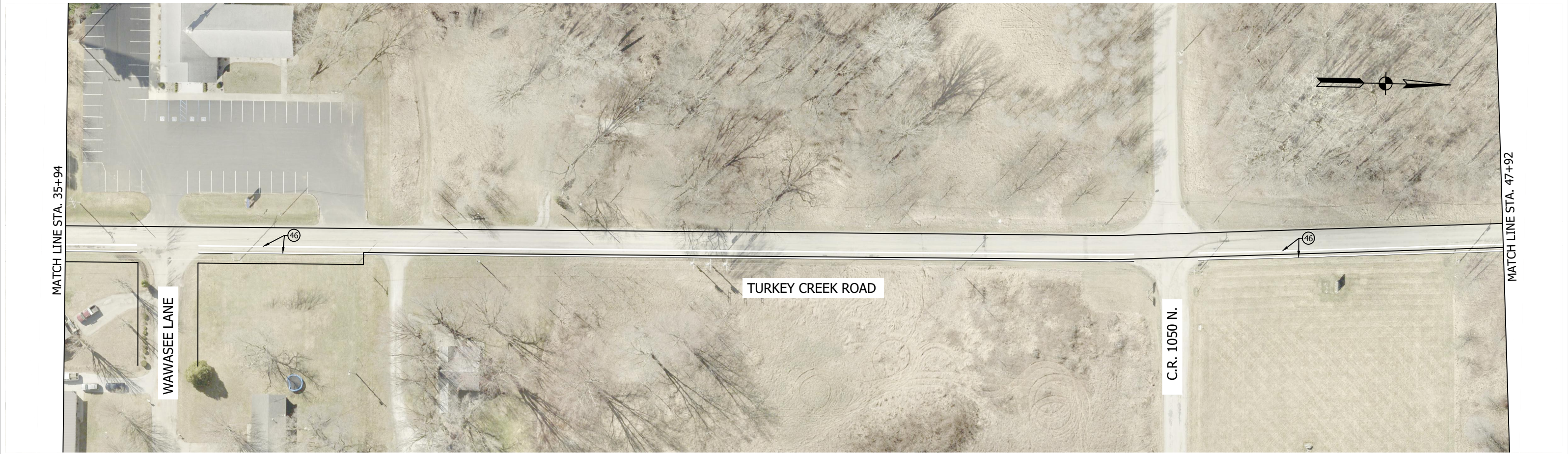
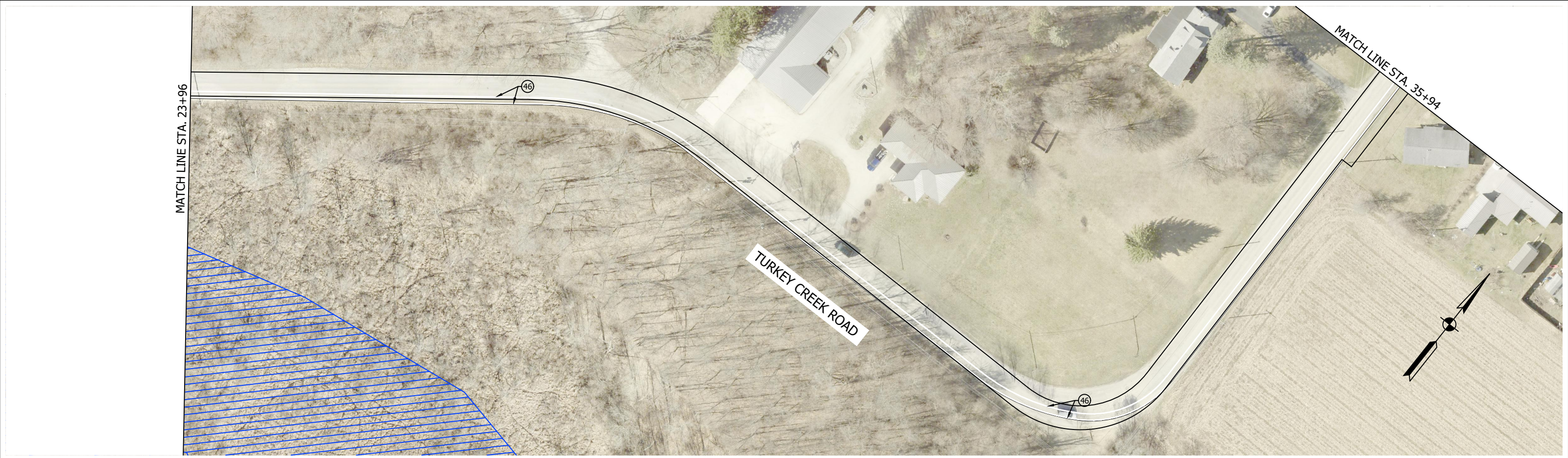


	NOT FOR CONSTRUCTION			SYRACUSE-WAWASEE TRAILS	HORIZONTAL SCALE		BRIDGE FILE		
					1" = 40'				
				VERTICAL SCALE		DESIGNATION			
				----		----			
		DESIGNED: WAH		DRAWN: WAH		SURVEY BOOK		SHEETS	
						16		of 18	
CHECKED: GRW		CHECKED: GRW		CONCEPTUAL ALIGNMENTS SECTION 2 - HATCHERY RD	CONTRACT		PROJECT		
							2020-0044		

Appendix A13:

Trail Section 3 - Segment 1:

Turkey Creek Rd. from Hiawatha Ln. to CR 1100 N.



<div>46</div> LINE, PAINT, SOLID, WHITE, 4 IN.	NOT FOR CONSTRUCTION			SYRACUSE-WAWASEE TRAILS		HORIZONTAL SCALE		BRIDGE FILE	
						1" = 40'			
						VERTICAL SCALE		DESIGNATION	
						----		-----	

		DESIGNED: WAH		DRAWN: WAH		CONCEPTUAL ALIGNMENTS SECTION 3 - TURKEY CREEK RD			
		CHECKED: GRW		CHECKED: GRW					



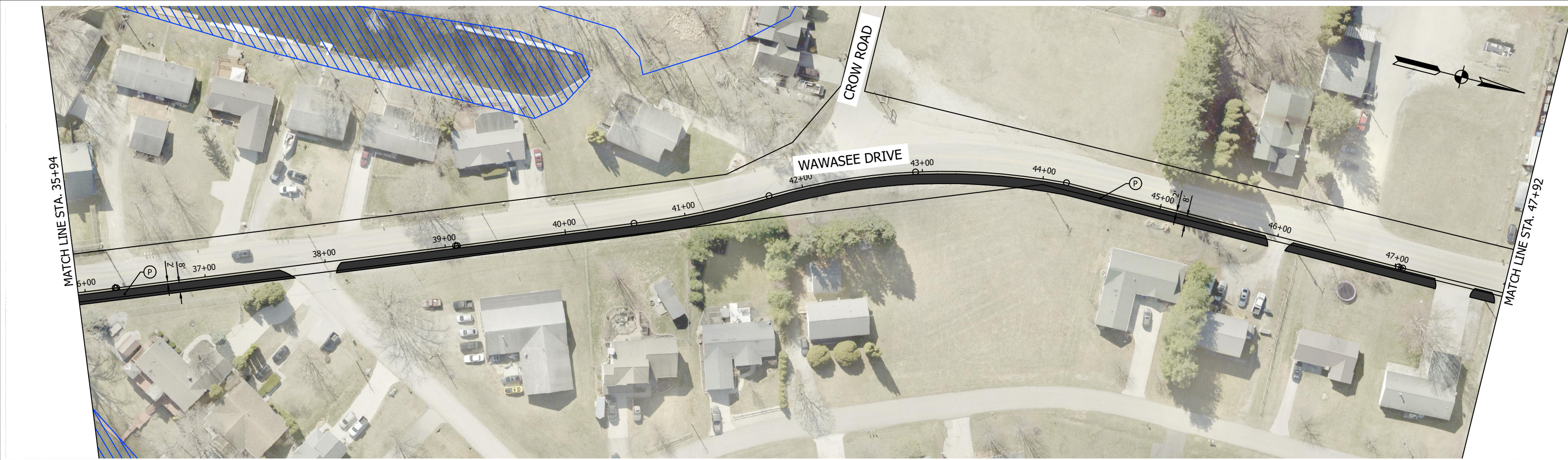
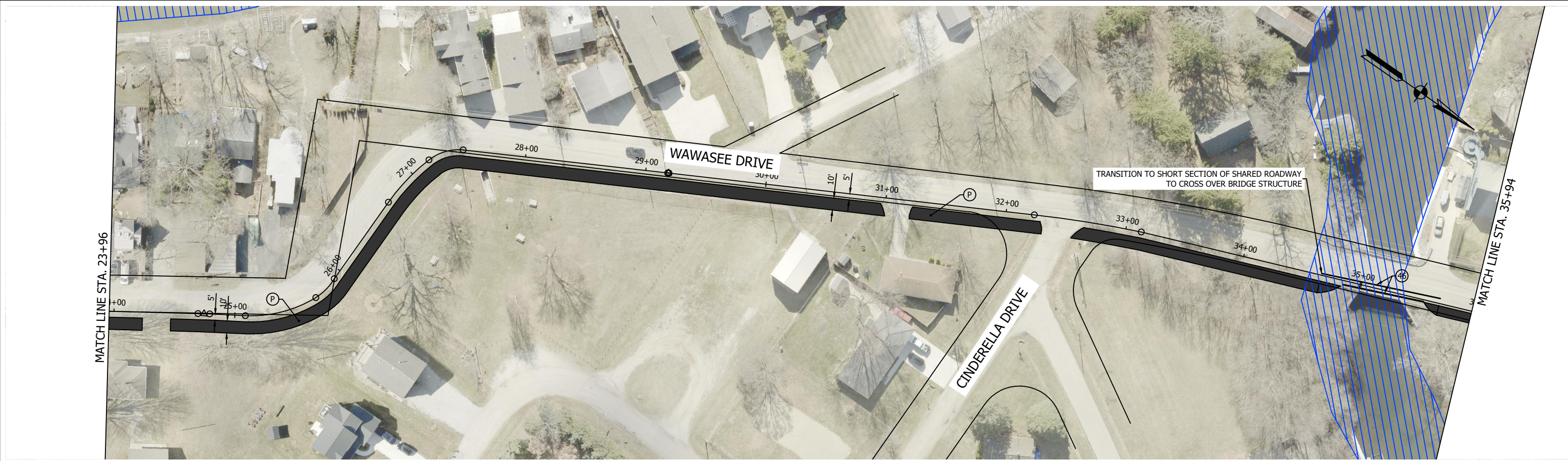
<div>46</div> LINE, PAINT, SOLID, WHITE, 4 IN.	<div>NOT FOR CONSTRUCTION</div>			SYRACUSE-WAWASEE TRAILS		HORIZONTAL SCALE		BRIDGE FILE		
						1" = 40'				
						VERTICAL SCALE		DESIGNATION		

		DESIGNED: WAH	DRAWN: WAH	CONCEPTUAL ALIGNMENTS SECTION 3 - TURKEY CREEK RD		SURVEY BOOK		SHEETS		
		CHECKED: GRW	CHECKED: GRW			3 of ----				
						CONTRACT		PROJECT		
								2020-0044		

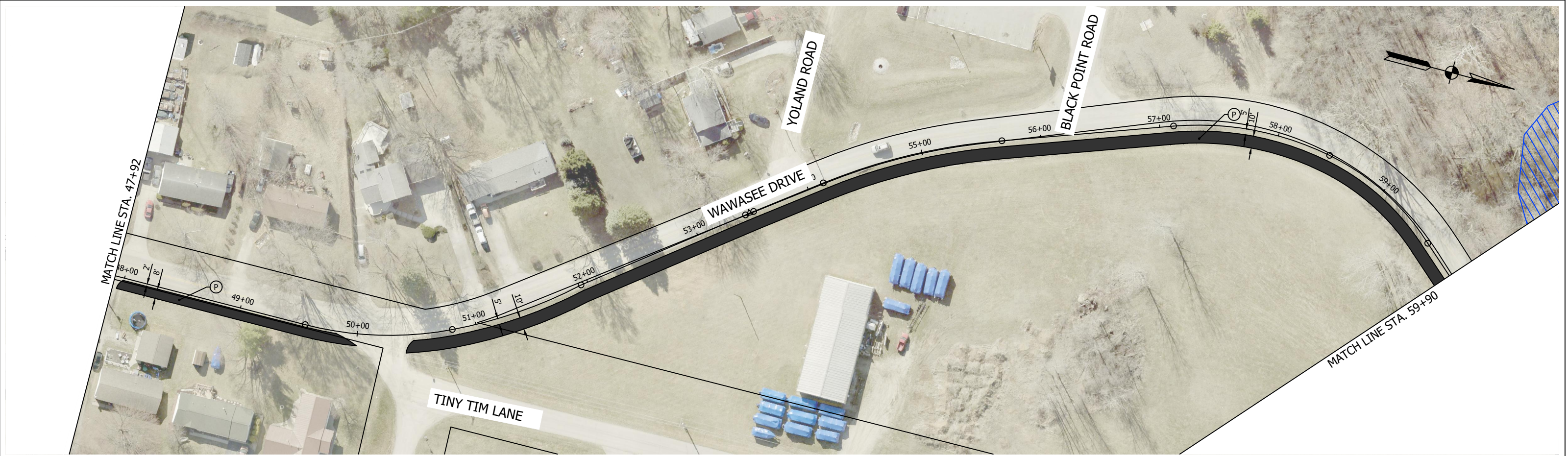
Appendix A14:

Trail Section 3 - Segment 2:

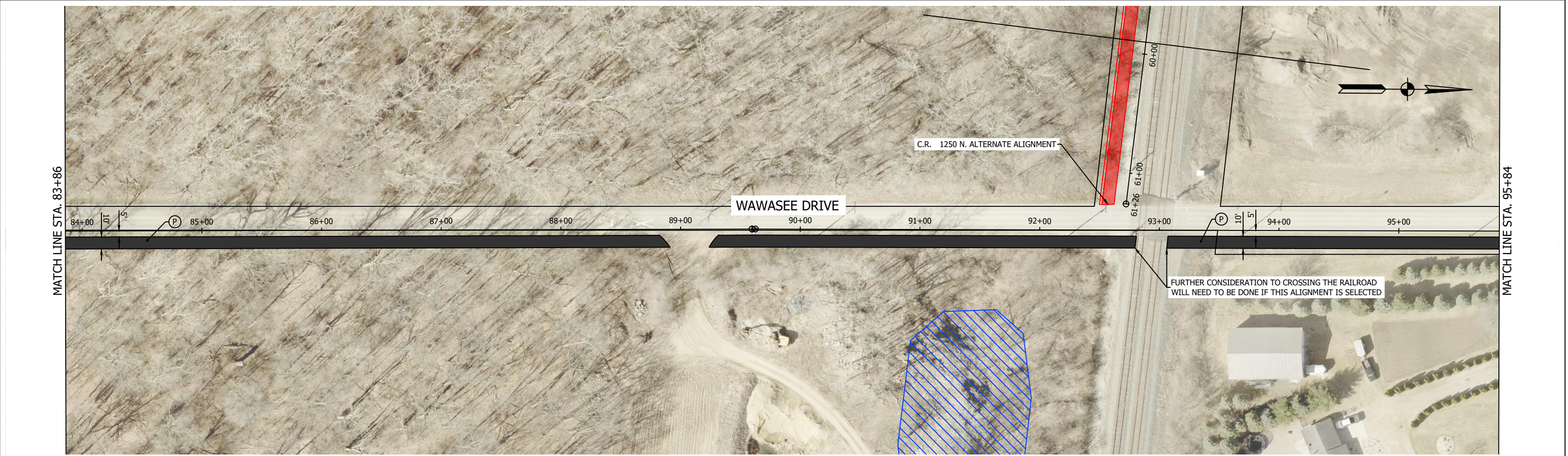
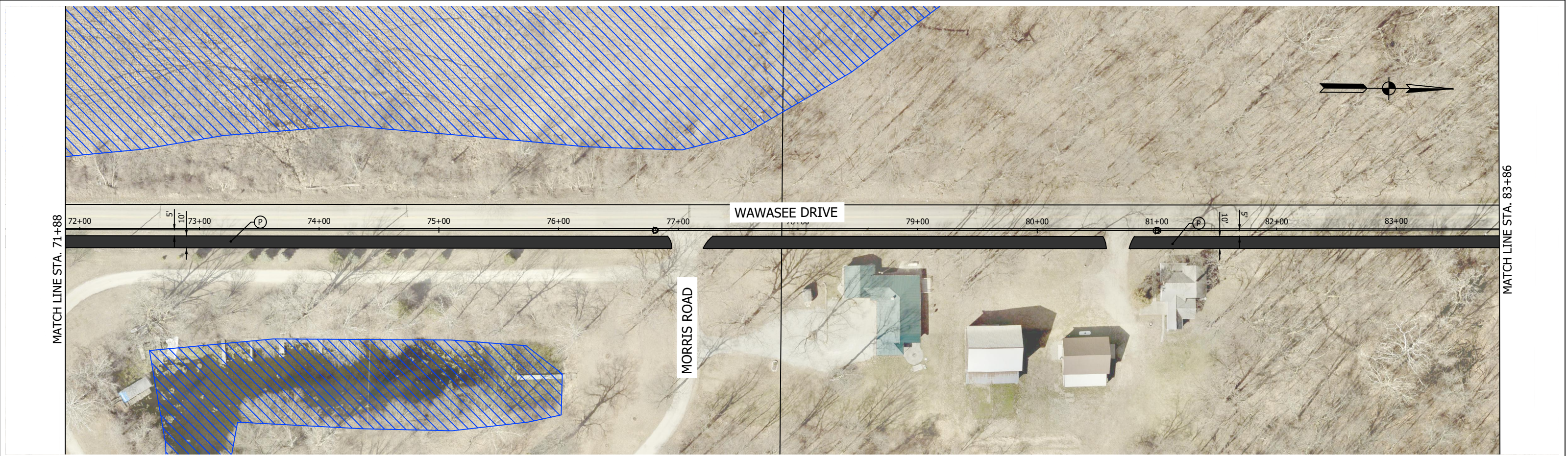
CR 1100 N. / Wawasee Dr. from Turkey Creek Rd. to CR 1250 N.



<div><div>P</div>SHARED-USE PATH, HMA</div>	<div>NOT FOR CONSTRUCTION</div>			SYRACUSE-WAWASEE TRAILS		HORIZONTAL SCALE		BRIDGE FILE		
						1" = 40'		DESIGNATION		
						VERTICAL SCALE		----		
						----		SHEETS		
		DESIGNED: WAH	DRAWN: WAH	CONCEPTUAL ALIGNMENTS SECTION 3 - WAWASEE DR		SURVEY BOOK		2 of ----		
		CHECKED: GRW	CHECKED: GRW			CONTRACT		PROJECT		
						2020-0044				



<div><div></div><div>SHARED-USE PATH, HMA</div></div>	<div>NOT FOR CONSTRUCTION</div>			SYRACUSE-WAWASEE TRAILS		<div>HORIZONTAL SCALE</div> <div>1" = 40'</div>		BRIDGE FILE		
						<div>VERTICAL SCALE</div> <div>----</div>		DESIGNATION		
						<div>SURVEY BOOK</div>		SHEETS		
						<div>CONTRACT</div>		PROJECT		
		DESIGNED: WAH		DRAWN: WAH		3 of ----		2020-0044		
		CHECKED: GRW		CHECKED: GRW						



<div><div></div><div>SHARED-USE PATH, HMA</div></div>	<div>NOT FOR CONSTRUCTION</div>			SYRACUSE-WAWASEE TRAILS		HORIZONTAL SCALE 1" = 40'		BRIDGE FILE	
						VERTICAL SCALE ----		DESIGNATION	
						SURVEY BOOK		SHEETS	
						4 of ----		PROJECT	
						CONTRACT		2020-0044	
						CONCEPTUAL ALIGNMENTS SECTION 3 - WAWASEE DR			



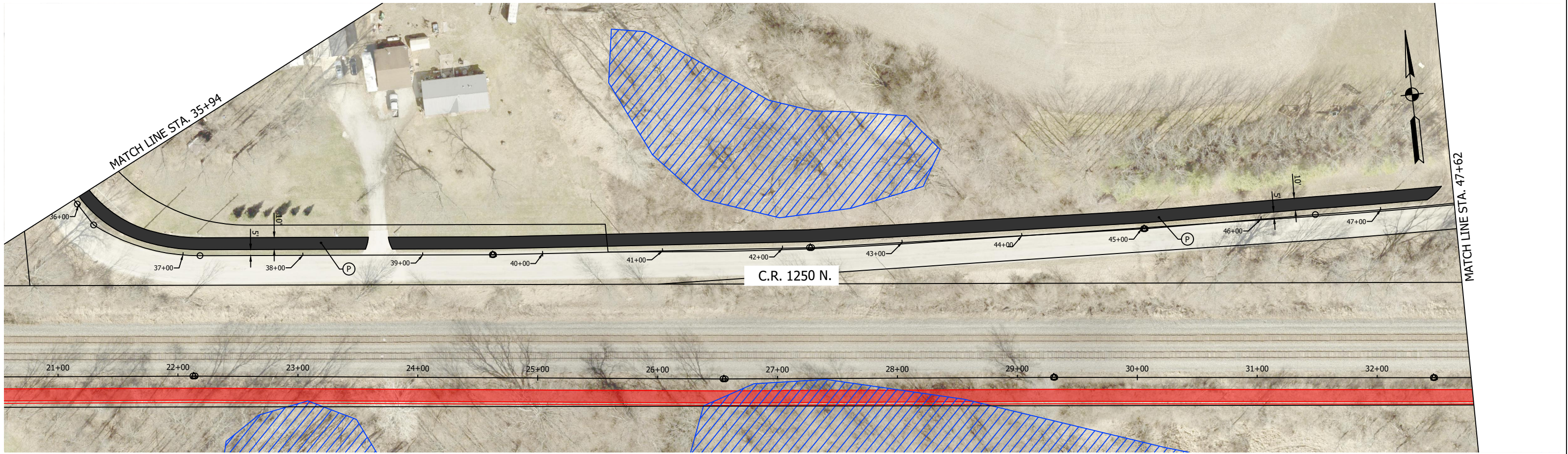
Appendix A15:

Trail Section 3 - Segment 3:

CR 1250 N. / CR 825 E. / CR 1290 N. Between Wawasee Dr. and Bishop Rd.



<div><div></div><div>SHARED-USE PATH, HMA</div></div>	<div>NOT FOR CONSTRUCTION</div>			SYRACUSE-WAWASEE TRAILS		<div>HORIZONTAL SCALE</div> <div>1" = 40'</div> <div>VERTICAL SCALE</div> <div>----</div>		<div>BRIDGE FILE</div> <div>DESIGNATION</div> <div>----</div>	
						<div>SURVEY BOOK</div>		<div>SHEETS</div> <div>1</div> <div>of</div> <div>----</div>	
						<div>CONTRACT</div>		<div>PROJECT</div> <div>2020-0044</div>	
						CONCEPTUAL ALIGNMENTS SECTION 3 - CR 1290 N			



(P) SHARED-USE PATH, HMA

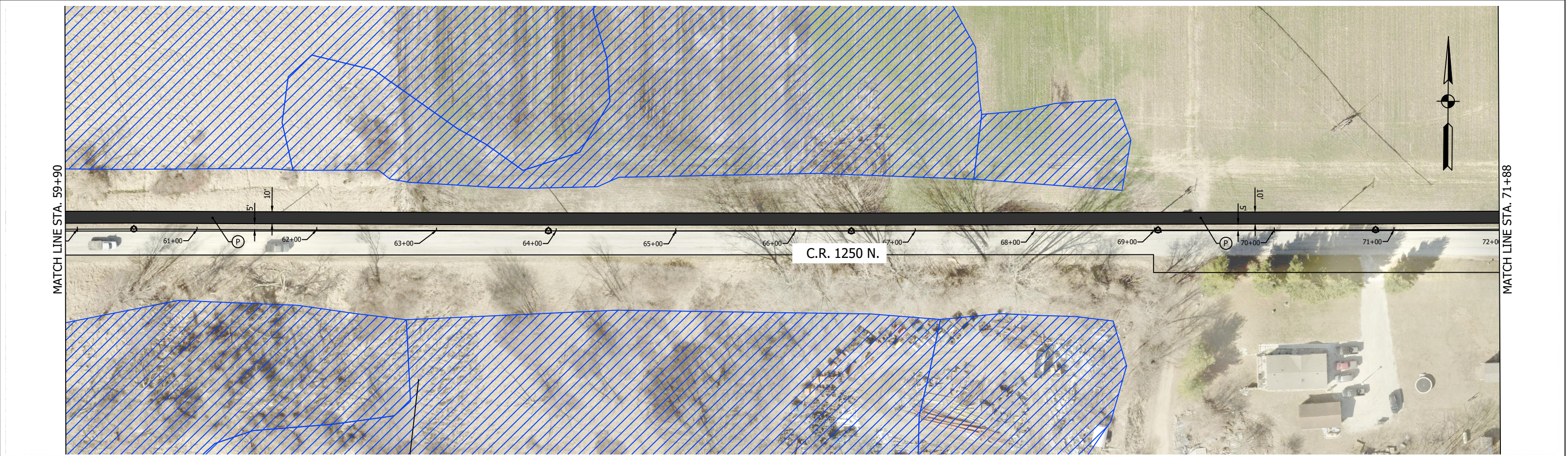
NOT FOR CONSTRUCTION

DESIGNED: WAH	DRAWN: WAH
CHECKED: GRW	CHECKED: GRW

SYRACUSE-WAWASEE TRAILS

CONCEPTUAL ALIGNMENTS
SECTION 3 - CR 825 E/CR 1250 N

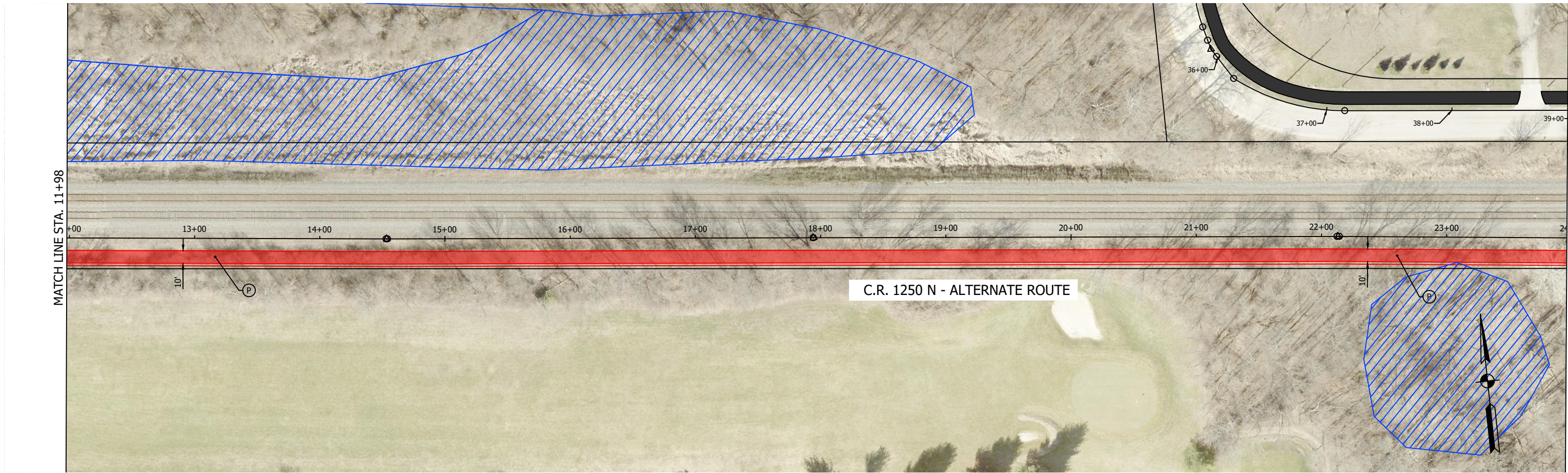
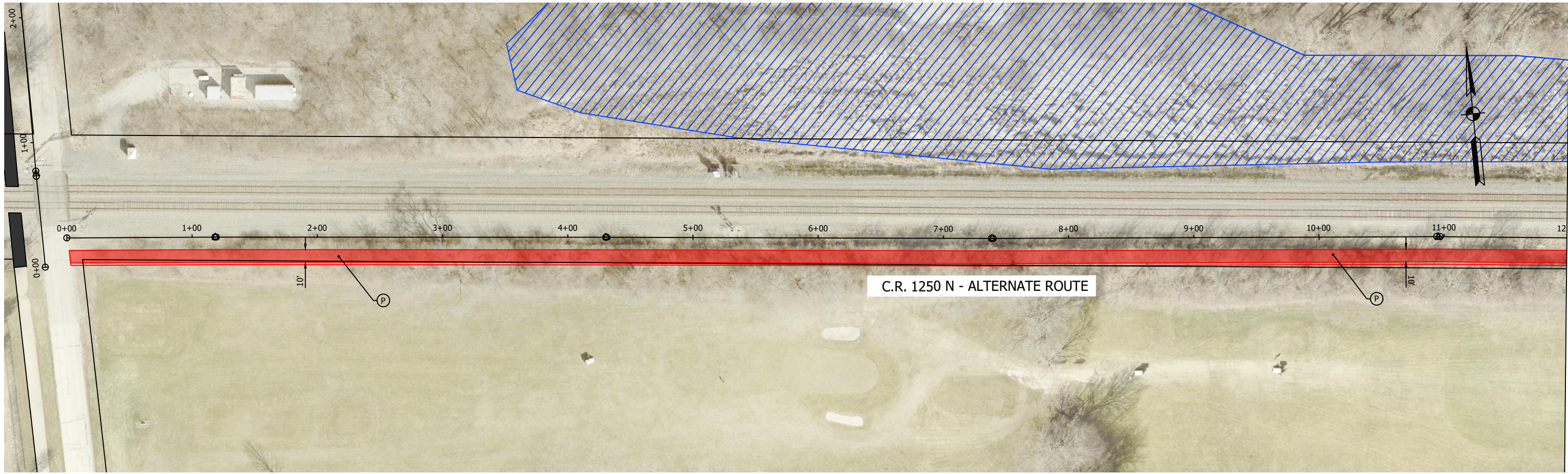
HORIZONTAL SCALE 1" = 40'	BRIDGE FILE
VERTICAL SCALE ----	DESIGNATION
SURVEY BOOK	SHEETS 2 of ----
CONTRACT	PROJECT 2020-0044



<div><div></div><div>SHARED-USE PATH, HMA</div></div>	<div>NOT FOR CONSTRUCTION</div>			SYRACUSE-WAWASEE TRAILS		HORIZONTAL SCALE 1" = 40'		BRIDGE FILE		
						VERTICAL SCALE ----		DESIGNATION		
						SURVEY BOOK		SHEETS		
						3 of ----		PROJECT		
		DESIGNED: WAH		DRAWN: WAH		CONTRACT		2020-0044		
		CHECKED: GRW		CHECKED: GRW						



<div><div></div><div>SHARED-USE PATH, HMA</div></div>	<div>NOT FOR CONSTRUCTION</div>			SYRACUSE-WAWASEE TRAILS		<div>HORIZONTAL SCALE</div> <div>1" = 40'</div> <div>VERTICAL SCALE</div> <div>----</div>	<div>BRIDGE FILE</div> <div>DESIGNATION</div> <div>----</div>
		<div>DESIGNED: WAH</div> <div>CHECKED: GRW</div>	<div>DRAWN: WAH</div> <div>CHECKED: GRW</div>	CONCEPTUAL ALIGNMENTS SECTION 3 - CR 1250 N		<div>SURVEY BOOK</div> <div>CONTRACT</div>	<div>SHEETS</div> <div>4 of ----</div> <div>PROJECT</div> <div>2020-0044</div>



(P) SHARED-USE PATH, HMA

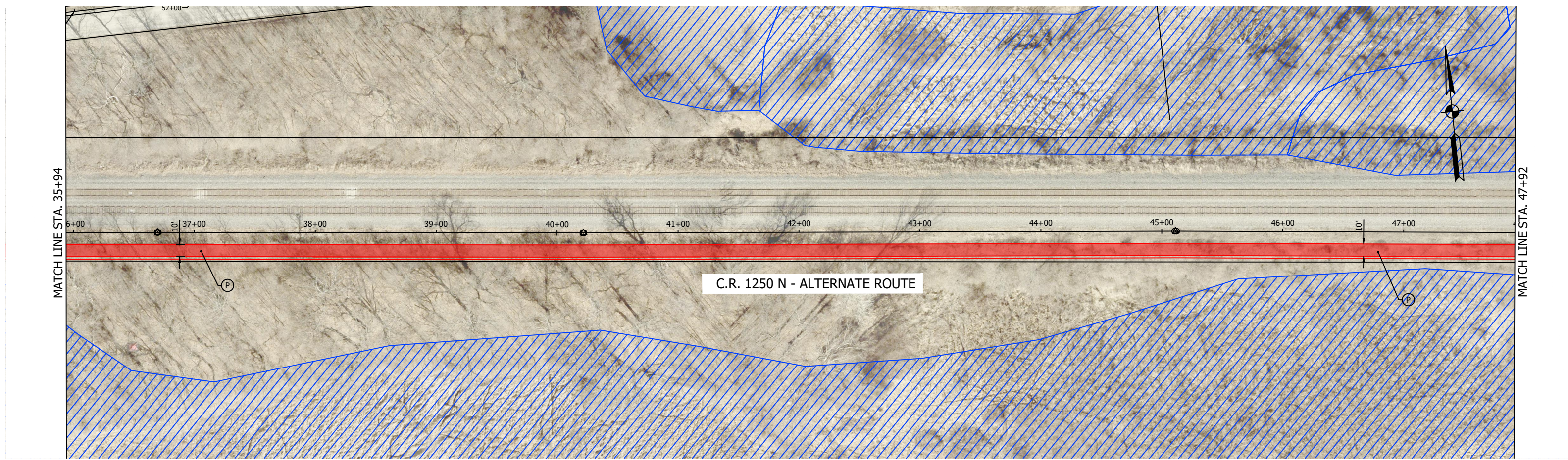
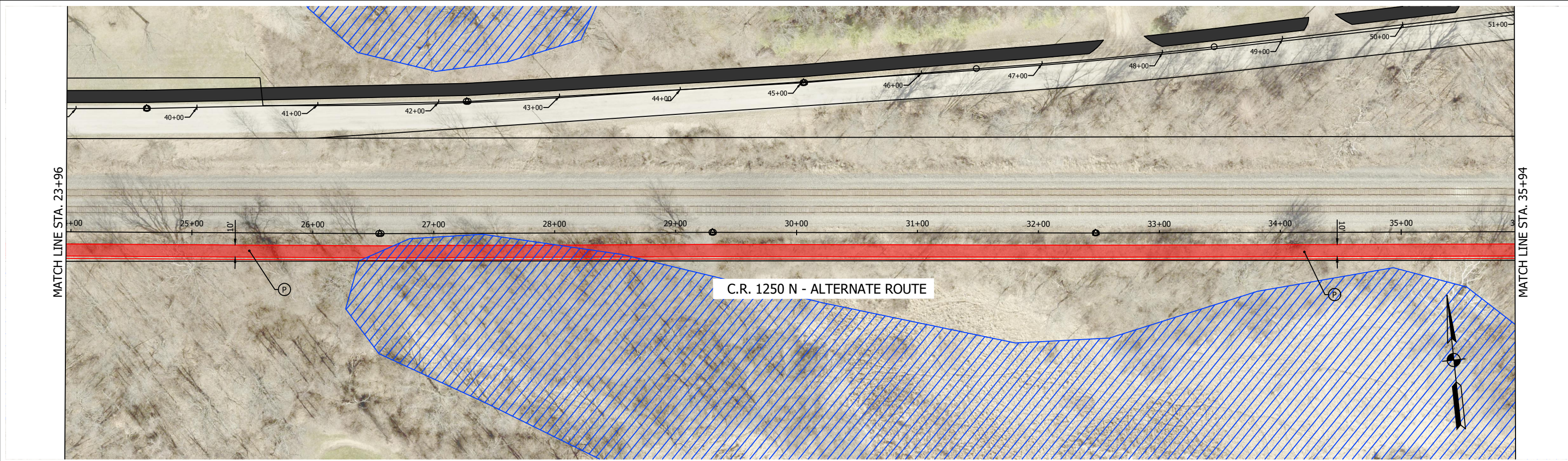
NOT FOR
CONSTRUCTION

DESIGNED: WAH	DRAWN: WAH
CHECKED: GRW	CHECKED: GRW

SYRACUSE-WAWASEE
TRAILS

CONCEPTUAL ALIGNMENTS
SECTION 3 - CR 1250 N (ALT)

HORIZONTAL SCALE 1" = 40'	BRIDGE FILE
VERTICAL SCALE ----	DESIGNATION
SURVEY BOOK	SHEETS 1 of ----
CONTRACT	PROJECT 2020-0044



(P) SHARED-USE PATH, HMA

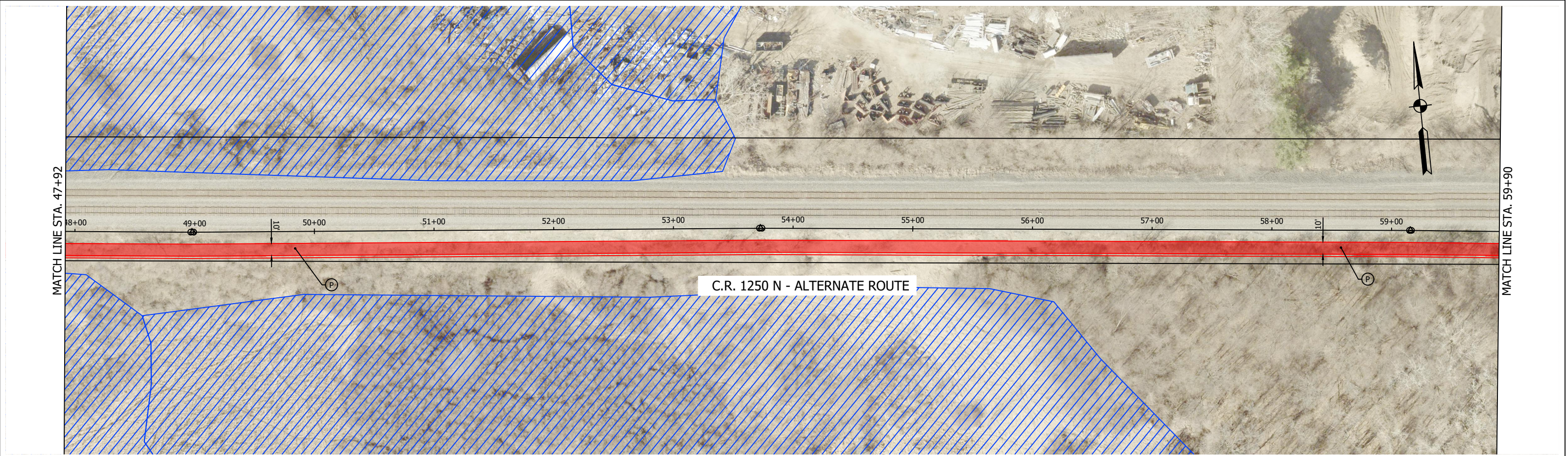
NOT FOR CONSTRUCTION

DESIGNED: WAH		DRAWN: WAH	
CHECKED: GRW		CHECKED: GRW	

SYRACUSE-WAWASEE TRAILS

CONCEPTUAL ALIGNMENTS
SECTION 3 - CR 1250 N (ALT)

HORIZONTAL SCALE 1" = 40'	BRIDGE FILE
VERTICAL SCALE ----	DESIGNATION
SURVEY BOOK	SHEETS
CONTRACT	2 of 1 PROJECT 2020-0044

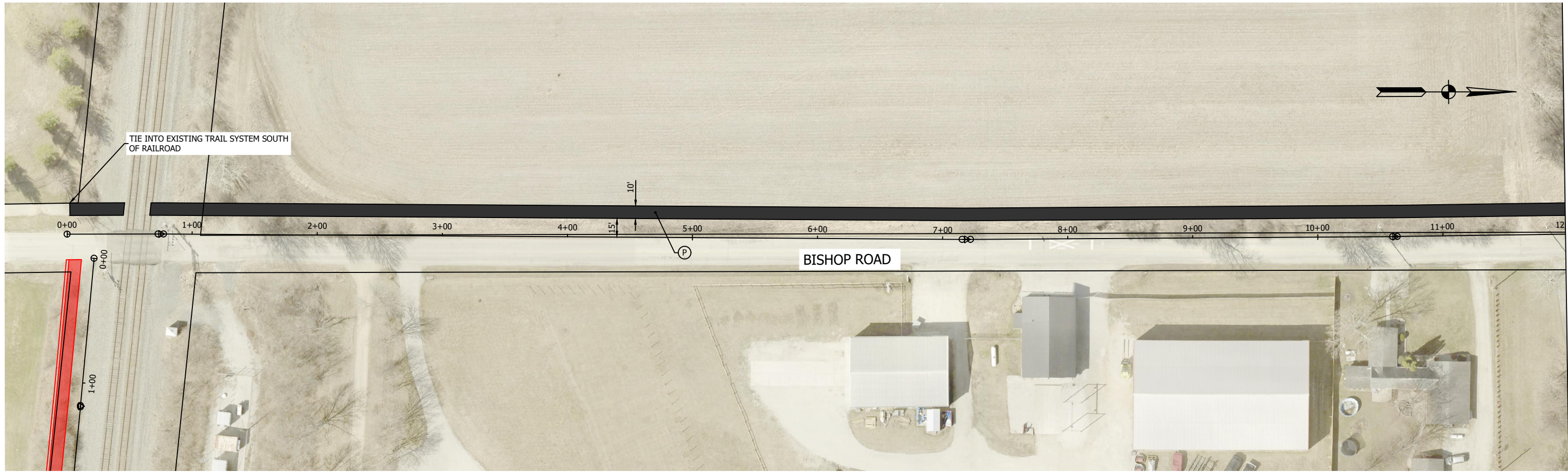


<div><div></div><div>SHARED-USE PATH, HMA</div></div>	<div>NOT FOR CONSTRUCTION</div>			SYRACUSE-WAWASEE TRAILS		HORIZONTAL SCALE 1" = 40'		BRIDGE FILE	
						VERTICAL SCALE ----		DESIGNATION	
						SURVEY BOOK		SHEETS	
						3		of	
						CONTRACT		PROJECT	
				CONCEPTUAL ALIGNMENTS SECTION 3 - CR 1250 N (ALT)				2020-0044	

Appendix A16:

Trail Section 3 - Segment 4:

Bishop Rd. from CR 1290 N. to existing trail



<div><div><div></div><div></div></div><div>SHARED-USE PATH, HMA</div></div>	<div>NOT FOR CONSTRUCTION</div>			SYRACUSE-WAWASEE TRAILS		HORIZONTAL SCALE		BRIDGE FILE	
						1" = 40'		DESIGNATION	
		VERTICAL SCALE		----		SURVEY BOOK		SHEETS	
		----		----		1 of ----			
DESIGNED: WAH	DRAWN: WAH	CONCEPTUAL ALIGNMENTS SECTION 3 - BISHOP RD		CONTRACT		PROJECT			
				2020-0044					
CHECKED: GRW	CHECKED: GRW								

Appendix B: Field Inventory Summaries

Syracuse-Wawasee Trail Feasibility Study
Section 1
Kosciusko County, Indiana



Photo 1: Facing north at E 1300 N and Kern Rd. intersection.



Photo 2: Facing south at E 1300 N and Kern Rd. intersection.



Photo 3: Multiuse path picks up at school baseball fields on east side.



Photo 4: Trail crosswalk from high school to elementary with solar powered flashing pedestrian signs.

Syracuse-Wawasee Trail Feasibility Study
Section 1
Kosciusko County, Indiana



Photo 5: Crosswalk from football parking to elementary school with solar powered flashing pedestrian signs.



Photo 6: East fence 12' from EOP. West fence 15' from EOP. 3Ph OHE on east side, 10' from EOP. Gas, fiber, and water on west side. Gas at EOP, other west utilities behind fence.



Photo 7: OHE crosses east to west side on Kern Rd.



Photo 8: Lift station on east side of Kern Rd.

Syracuse-Wawasee Trail Feasibility Study
Section 1
Kosciusko County, Indiana



Photo 9: OH and UG utilities close to Kern Rd. both sides.



Photo 10: Intersection of E 1200N and Kern Rd. facing NW. United systems on fiber and telephone risers.



Photo 11: Intersection of E 1200N and Kern Rd facing NE. United systems on fiber and telephone risers.



Photo 12: OHE and fiber on south side of E 1200 N. Poles offset 5' from EOP from Kern Rd. to Syracuse Webster Rd.

Syracuse-Wawasee Trail Feasibility Study
Section 1
Kosciusko County, Indiana



Photo 13: "Crazy Corners" intersection at E 1200 N and Syracuse Webster Rd. corner looking E.



Photo 14: "Crazy Corners" intersection at E 1200 N and Syracuse Webster Rd. corner looking SE.



Photo 15: "Crazy Corners" intersection at E 1200 N and Syracuse Webster Rd. corner looking NW.



Photo 16: "Crazy Corners" intersection at E 1200 N and Syracuse Webster Rd. corner looking W.

Syracuse-Wawasee Trail Feasibility Study
Section 1
Kosciusko County, Indiana



Photo 17: "Crazy Corners" intersection at E 1200 N and Syracuse Webster Rd. corner looking E.



Photo 18: "Crazy Corners" intersection at E 1200 N and Syracuse Webster Rd. corner looking SW.



*Photo 19: Existing 72" CMP (Asset No.: 43-0014-00000-36)
Max Span Length (ft): 6.0; Length Along Skew (ft): 46.0.*



Photo 20: Guardrail offset 6' from EOP with unstable gravel shoulder 2:1 slope. CMP may need extended for trail.

Syracuse-Wawasee Trail Feasibility Study
Section 1
Kosciusko County, Indiana



Photo 21: Guardrail with unstable gravel shoulder.



Photo 22: Billboard. Tight to Roadway.



Photo 23: 8' Fence at HL Storage. Tight to roadway.



Photo 24: Monitoring wells throughout property. Potential Brownfield/Remediation ongoing.

Syracuse-Wawasee Trail Feasibility Study
Section 1
Kosciusko County, Indiana



Photo 25: Monitoring wells throughout property. Potential Brownfield/Remediation ongoing.



Photo 26: Monitoring wells throughout property. Potential Brownfield/Remediation ongoing.



Photo 27: Monitoring wells throughout parking lot of Bowling Alley, potential Brownfield/Remediation.



Photo 28: Monitoring wells throughout parking lot of Bowling Alley, potential Brownfield/Remediation.

Syracuse-Wawasee Trail Feasibility Study
Section 1
Kosciusko County, Indiana



Photo 29: Monitoring wells throughout parking lot of Bowling Alley, potential Brownfield/Remediation.



Photo 30: Monitoring wells throughout property. Potential Brownfield/Remediation ongoing.



Photo 31: Monitoring wells throughout property. Potential Brownfield/Remediation ongoing.



Photo 32: Monitoring wells throughout property. Potential Brownfield/Remediation ongoing.

Syracuse-Wawasee Trail Feasibility Study
Section 1
Kosciusko County, Indiana



Photo 33: Monitoring wells throughout property. Potential Brownfield/Remediation ongoing.



Photo 34: Monitoring wells throughout property. Potential Brownfield/Remediation ongoing.



Photo 35: Facing northwest at intersection of Bowser Rd. and SR 13.



Photo 36: Water and stormwater utilities at northeast intersection of Bowser Rd. and Huntington St.

Syracuse-Wawasee Trail Feasibility Study
Section 1
Kosciusko County, Indiana



Photo 37: Water and stormwater utilities at northeast intersection of Bowser Rd. and Huntington St.



Photo 38: Facing north at intersection of Bowser Rd. and Huntington St.



Photo 39: Facing northwest at intersection of Bowser Rd. and Huntington St.



Photo 40: Facing northeast at intersection of Bowser Rd. and Huntington St.

Syracuse-Wawasee Trail Feasibility Study
Section 2
Kosciusko County, Indiana



Photo 41: Begin Section 2. Facing east at intersection of Waco Dr. and SR 13.



Photo 42: Begin Section 2. Facing east along Waco Dr.



Photo 43: Begin Section 2. Pipe facing south at intersection of Waco Dr. and SR 13.



Photo 44: Begin Section 2. Signage facing east at intersection of Waco Dr. and SR 13.

Syracuse-Wawasee Trail Feasibility Study
Section 2
Kosciusko County, Indiana



Photo 45: OHE with comm under build along north side of Waco Dr.



Photo 46: Force main along south side of Waco Dr.



Photo 47: OHE transfers from north to south on Waco Dr.



Photo 48: NIPSCO 69kv transmission with apparent UG comm on south side of SR 13.

Syracuse-Wawasee Trail Feasibility Study
Section 2
Kosciusko County, Indiana



Photo 49: NIPSCO 69kv transmission with apparent UG comm on south side of SR 13.



Photo 50: NIPSCO 69kv transmission with apparent UG comm on south side of SR 13.



Photo 51: NIPSCO 69kv transmission with apparent UG comm on south side of SR 13.



Photo 52: NIPSCO 69kv transmission with apparent UG comm on south side of SR 13.

Syracuse-Wawasee Trail Feasibility Study
Section 2
Kosciusko County, Indiana



Photo 53: NIPSCO 69kv transmission with apparent UG comm on south side of SR 13.



Photo 54: North side of SR 13, 10' wide paved shoulder. Drive pipes and mailboxes throughout. Gas pipeline markers near mailboxes.



Photo 55: North side of SR 13, 10' wide paved shoulder.



Photo 56: North side of SR 13, 10' wide paved shoulder.

Syracuse-Wawasee Trail Feasibility Study
Section 2
Kosciusko County, Indiana



Photo 57: North side of SR 13, 10' wide paved shoulder.



Photo 58: North side of SR 13, 10' wide paved shoulder.



Photo 59: Along SR 13 south side.



Photo 60: Along SR 13 south side.

Syracuse-Wawasee Trail Feasibility Study
Section 2
Kosciusko County, Indiana



Photo 61: At intersection of Southshore Dr. and SR 13. NIPSCO OHE with comm under build on north side (waterfront side).



Photo 62: Existing Small Structure Reinforced Concrete Slab (Asset No.: 43-0014-00000-25) Max Span Length (ft): 9.0; Length Along Skew (ft): 26.0; Height of Opening (ft): 4.4



Photo 63: Existing small structure with gas main exposed.



Photo 64: Existing small structure with gas main exposed.

Syracuse-Wawasee Trail Feasibility Study
Section 2
Kosciusko County, Indiana



Photo 65: Force main and OHE. OHE poles about 10' off EOP on south (SR 13 side). Gas main apparent 6" steel on north (waterfront side).



Photo 66: Force main and OHE.



Photo 67: Force main and OHE.



Photo 68: Force main and OHE.

Syracuse-Wawasee Trail Feasibility Study
Section 2
Kosciusko County, Indiana



Photo 69: Very tight limits with low sight distance. OHE poles on north side and OHT on south, both 2' from EOP.



Photo 70: Very tight limits with low sight distance. OHE poles on north side and OHT on south, both 2' from EOP.



Photo 71: Vawter Park Rd. and N 800 E intersection.



Photo 72: Vawter Park Rd. and N 800 E intersection.

Syracuse-Wawasee Trail Feasibility Study
Section 2
Kosciusko County, Indiana



Photo 73: Vawter Park Rd. and N 800 E intersection.



Photo 74: Lift station at intersection of Hatchery Rd. and Hass Hill Rd.



Photo 75: Steep embankment on south and OHE pole set 5' from EOP on north. Limited sight distances throughout.



Photo 76: Existing Bridge Concrete Box Beam Bridge (Asset No.: 43-00265) Max Span Length (ft): 22.0; Length (ft): 28.0.

Syracuse-Wawasee Trail Feasibility Study
Section 3
Kosciusko County, Indiana



Photo 77: Intersection of E 1000 N and Turkey Creek Rd.



Photo 78: Intersection of E 1000 N and Turkey Creek Rd.



Photo 79: Intersection of E 1000 N and Turkey Creek Rd.



Photo 80: Intersection of E 1000 N and Turkey Creek Rd.

Syracuse-Wawasee Trail Feasibility Study
Section 3
Kosciusko County, Indiana



Photo 81: Intersection of E 1000 N and Turkey Creek Rd.



Photo 82: Intersection of E 1000 N and Turkey Creek Rd.



Photo 83: Utilities at intersection of Turkey Creek Rd. and Natti Crow.



Photo 84: Force main back to east side.

Syracuse-Wawasee Trail Feasibility Study
Section 3
Kosciusko County, Indiana



Photo 85: Wetland area on east side, mature vegetation up to roadway on west side.



Photo 86: Kosciusko Co. Bikeway signage near intersection of Turkey Creek Rd. and E 1100 N.



Photo 87: Deep ditching on east side, wetlands up to road on west side.



Photo 88: Kosciusko Co Bikeway signage near intersection of Wawasee Dr and E 1250 N.

Appendix C: Meeting Agendas and Minutes

Kickoff Meeting Agenda

Syracuse-Wawasee Trail Study:
Multiple Trail Segments in Syracuse
and Surrounding Wawasee Area

March 29th, 2021 @ 4:00 p.m.

➤ Introduction of Project Team

- ◆ Wyatt Huber – Project Manager and Roadway Design Engineer
- ◆ Ross Waggoner – Environmental Specialist
- ◆ Kelly Marley, PS – Right-of-Way Project Manager
- ◆ Alan Pecor – UAS/Drone Pilot
- ◆ Ben Beer – USI Vice President of Sales

➤ Kickoff Items

◆ Overview of Trail Sections

- Section 1: Kern/CR 1200N/Syr-Web/Chicago
- Section 2: Waco/Vawter/CR 800E/Hatchery
- Section 3: Hatchery/Turkey Creek/CR 1250N/Bishop

◆ Purpose of the Study

To develop conceptual trail alignments throughout the Syracuse-Wawasee area to connect and expand the existing trail system, and evaluate each conceptual alignment for design, environmental, right-of-way, and utility impacts.

➤ Section Overview

◆ Section 1: Kern/CR 1200N/Syr-Web/Chicago

- Kern Road

Bordered by Wawasee High School and park areas at north end, some residential and agricultural parcels to southern end.

- CR 1200N

Bordered by residential and agricultural properties. Would tie into trail at Kern Road, Syracuse-Webster Road, and Harkness Drive.

- Syracuse-Webster Road
Bordered by residential properties. Limits would tie into existing trail section approximately 0.16 miles north of CR 1200 N and continue down to proposed trail.
- Chicago Street
Bordered by commercial properties. Purpose to tie in sidewalk section at Huntington/Chicago intersection to existing trail system along Syracuse-Webster Road
- **Trail Group: Major Concerns with Section 1?**
- **Trail Group: Is there a Desire for Specific Alignments/Aspects/Amenities along Section 1?**
- **Trail Group: Questions?**

◆ Section 2: Waco/Vawter/CR 800E/Hatchery

- Waco Drive
Bordered primarily by lake-front residential properties. Will follow along SR 13 in a couple sections to travel down to Vawter Park Road.
- Vawter Park Road
Bordered primarily by residential properties and wooded areas. Connect to Southshore Drive and CR 800E.
- CR 800E
Bordered by residential and agricultural properties. Limits would connect trail system along Vawter Park Road to CR 1000N and Hatchery Road.
- CR 1000N
Bordered primarily by agricultural properties, with Wawasee Middle School property at the west end. Proposed section would tie trail system along CR 800E with potential trail system along SR 13 being developed by the Town of North Webster.
- Hatchery Road
Bordered primarily by residential properties and lake-front homes. Narrow roadway and tight right-of-way conditions. Connects Section 2 trail system to Section 3 trail system at Hatchery Road/Turkey Creek Road intersection.
- **Trail Group: Major Concerns with Section 2?**
- **Trail Group: Is there a Desire for Specific Alignments/Aspects/Amenities along Section 2?**

- **Trail Group: Questions?**

- ◆ Section 3: Hatchery/Turkey Creek/CR 1250N/Bishop

- Hatchery Road/Turkey Creek Road

- Bordered by residential and commercial properties at the southern end, then transitions to more wooded area with periodic residential properties. Connects Section 2 system and travels up to Wawasee Drive.

- Turkey Creek Road/Wawasee Drive

- Bordered primarily by residential properties and connects various subdivisions. Northern end transitions to more rural, agricultural land use. Initial alignment considers crossing railroad and following CR 1250 N.

- CR 1250N

- Bordered primarily by agricultural properties. Trail system would follow CR 1250 N through S-curve to tie into Bishop Road.

- Bishop Road

- Bordered primarily by agricultural properties. Trail would tie Section 3 system into existing Syracuse-Wawasee Trail system terminus south of railroad tracks.

- **Trail Group: Major Concerns with Section 3?**

- **Trail Group: Is there a Desire for Specific Alignments/Aspects/Amenities along Section 3?**

- **Trail Group: Questions?**

- Trail Study – Next Steps

- ◆ Site Visit

- USI's field team will consist of Wyatt Huber, Ross Waggoner, and Alan Pecor.
 - Looking to schedule initial site visit across a couple days in late April.
 - Goals of site visit will be to gather photos and aerials of potential trail segments, identify existing utilities and right-of-way evidence, note environmental concerns, and gather other information to inform the remaining study activities

- ◆ Desktop Review/Information Gathering

- Each aspect of the study (Environmental, Right-of-Way, Utility Coordination) will begin to gather information and start the desktop review portions of the study.

◆ Project Update/Follow-up

The project team will have an update on the study progress two weeks after the completed site visit.

Placeholder Dates for next follow-up: May 10th, 2021 or May 17th, 2021

Kickoff Meeting Minutes

Syracuse-Wawasee Trail Study:
Multiple Trail Segments in Syracuse
and Surrounding Wawasee Area

Held on: March 29th, 2021 @ 4:00 p.m.

➤ Introduction of Project Team

- ◆ Wyatt Huber – Project Manager and Roadway Design Engineer
- ◆ Ross Waggoner – Environmental Specialist
- ◆ Kelly Marley, PS – Right-of-Way Project Manager
- ◆ Alan Pecor – UAS/Drone Pilot
- ◆ Ben Beer – USI Vice President of Sales

Other Project Members not present:

- ◆ Natalie Parks – Lead Utility and Railroad Coordinator
- ◆ Jacob Gardener – Right-of-Way Department Manager

➤ Kickoff Items

- ◆ Overview of Trail Sections
 - Section 1: Kern/CR 1200N/Syr-Web/Chicago
 - Section 2: Waco/Vawter/CR 800E/Hatchery
 - Section 3: Hatchery/Turkey Creek/CR 1250N/Bishop

- ◆ Purpose of the Study

To develop conceptual trail alignments throughout the Syracuse-Wawasee area to connect and expand the existing trail system, and evaluate each conceptual alignment for design, environmental, right-of-way, and utility impacts.

➤ Section Overview

- ◆ Section 1: Kern/CR 1200N/Syr-Web/Chicago
 - Kern Road

Bordered by Wawasee High School and park areas at north end, some residential and agricultural parcels to southern end.

- **CR 1200N**
Bordered by residential and agricultural properties. Would tie into trail at Kern Road, Syracuse-Webster Road, and Harkness Drive.
 - **Syracuse-Webster Road**
Bordered by residential properties. Limits would tie into existing trail section approximately 0.16 miles north of CR 1200 N and continue down to proposed trail.
 - **Chicago Street**
Bordered by commercial properties. Purpose to tie in sidewalk section at Huntington/Chicago intersection to existing trail system along Syracuse-Webster Road
 - **Trail Group: Major Concerns with Section 1?**
 - Group concurred with continuing sidewalk along Chicago Street, with a crossing similar to Pickwick Drive.
 - Discussed connecting existing trail system along Syracuse-Wawasee to CR 1200N. Understood that originally, homeowner would construct remaining portion of Syracuse-Wawasee, but should not be a contentious project. Project Team likely to encounter some additional complexities at intersection of Syracuse-Wawasee Road near Brook Pointe Inn (Crazy Corners).
 - Group noted that outside of Chicago Street, all proposed trail segments are located outside of Syracuse limits.
 - **Trail Group: Is there a Desire for Specific Alignments/Aspects/Amenities along Section 1?**
 - Project Team understood that while trail heads or resting areas would likely be included along portions of the trail, Group did not feel that this was within the scope of this study.
 - **Trail Group: Questions?**
 - Group identified potential upcoming projects, involving acceleration/deceleration lanes, along Kern Road.
- ◆ **Section 2: Waco/Vawter/CR 800E/Hatchery**
- **Waco Drive**
Bordered primarily by lake-front residential properties. Will follow along SR 13 in a couple sections to travel down to Vawter Park Road.

- Vawter Park Road
Bordered primarily by residential properties and wooded areas. Connect to Southshore Drive and CR 800E.
 - CR 800E
Bordered by residential and agricultural properties. Limits would connect trail system along Vawter Park Road to CR 1000N and Hatchery Road.
 - CR 1000N
Bordered primarily by agricultural properties, with Wawasee Middle School property at the west end. Proposed section would tie trail system along CR 800E with potential trail system along SR 13 being developed by the Town of North Webster.
 - Hatchery Road
Bordered primarily by residential properties and lake-front homes. Narrow roadway and tight right-of-way conditions. Connects Section 2 trail system to Section 3 trail system at Hatchery Road/Turkey Creek Road intersection.
 - **Trail Group: Major Concerns with Section 2?**
 - No major concerns were identified by Group. Group mentioned that majority of past trail work has occurred within road right-of-way, or in DNR property. Group have some easements in areas, but have not had to acquire property from land owners.
 - **Trail Group: Is there a Desire for Specific Alignments/Aspects/Amenities along Section 2?**
 - Group identified need for Section 2 to connect proposed system to the completed Conklin Bay section, starting at Grandview and continuing to Waco. Group and Project Team discussed potential shared-use on roadways for this section.
 - **Trail Group: Questions?**
 - No additional questions on Section 2 were raised.
- ◆ Section 3: Hatchery/Turkey Creek/CR 1250N/Bishop
- Hatchery Road/Turkey Creek Road
Bordered by residential and commercial properties at the southern end, then transitions to more wooded area with periodic residential properties. Connects Section 2 system and travels up to Wawasee Drive.

- Turkey Creek Road/Wawasee Drive
Bordered primarily by residential properties and connects various subdivisions. Northern end transitions to more rural, agricultural land use. Initial alignment considers crossing railroad and following CR 1250 N.
 - CR 1250N
Bordered primarily by agricultural properties. Trail system would follow CR 1250 N through S-curve to tie into Bishop Road.
 - Bishop Road
Bordered primarily by agricultural properties. Trail would tie Section 3 system into existing Syracuse-Wawasee Trail system terminus south of railroad tracks.
 - **Trail Group: Major Concerns with Section 3?**
 - Project Team and Group discussed tight right-of-way conditions along Hatchery /Turkey Creek, potential for right-of-way acquisition in areas.
 - **Trail Group: Is there a Desire for Specific Alignments/Aspects/Amenities along Section 3?**
 - No specific items were raised.
 - **Trail Group: Questions?**
 - Group mentioned that so far, all impacts to wetlands have used helical piers, have not had to pay for mitigation. Group raised interest in looking to other trails through wetlands as example. Project Team will need to be treat wetland areas delicately.
- Trail Study – Next Steps
- ◆ Site Visit
 - USI's field team will consist of Wyatt Huber, Ross Waggoner, and Alan Pecor.
 - Looking to schedule initial site visit across a couple days in late April.
 - Goals of site visit will be to gather photos and aerials of potential trail segments, identify existing utilities and right-of-way evidence, note environmental concerns, and gather other information to inform the remaining study activities.
 - ◆ Desktop Review/Information Gathering
 - Each aspect of the study (Environmental, Right-of-Way, Utility Coordination) will begin to gather information and start the desktop review portions of the study.

◆ Project Update/Follow-up

The project team will have an update on the study progress two weeks after the completed site visit.

Per discussion between Project Team and Group, **May 17th, 2021** was selected as the next date for project update.

Other Items:

- Project Team will identify key areas with photos for further discussion with the Group.
- Project Team will deliver a finalized study in 6 months, ahead of Next Level Trails call for projects opening in November.

Monthly Update Meeting Agenda

Syracuse-Wawasee Trail Study: Multiple Trail Segments in Syracuse and Surrounding Wawasee Area

May 17th, 2021 @ 5:00 p.m.

➤ Project Updates/Milestones

- ◆ Site Visit
 - Field crew visit rescheduled for latter half of May
- ◆ Drone Mapping
 - Drone flights were prepared and performed at eight locations along various trail segments
 - Orthomosaic images and existing contours being processed for each flight
- ◆ Environmental
 - Completed preliminary desktop research including review of:
 - Indiana State Historic Architectural and Archaeological Research Database (SHAARD)
 - The US Fish and Wildlife National Wetlands Inventory (NWI)
 - INDOT Site Assessment Management (SAM) Red Flag Investigation Resources
 - Area of particular concern is the trail connectivity in Trail Section 3 to get around Johnson Bay
- ◆ Right-of-Way
 - Verification of existing right-of-way is underway
 - The majority of plats for subdivided areas have been located and will be the basis of existing right-of-way in these areas
 - Majority of platted areas show a 40 – 50' right-of-way (20 – 25' each side of centerline)
 - Some areas show no right-of-way, existing is assumed at edge of pavement (Portions along Chicago Street, Southshore Drive)
 - Coordination is underway with other LPAs along the project route to locate any additional evidence of existing right-of-way
- ◆ Utility Coordination
 - Initial Notices were sent out to listed utilities on April 14th, 2021
 - Responses received from most utilities. The following facilities are expected to be within the project area:

- CenturyLink (Overhead and Underground Fiber Optic and Copper)
- Kosciusko REMC (Overhead 3-phase Electric)
- Mediacom (Overhead Coaxial and Fiber Optic, Buried Facilities in Some Areas)
- Nipsco Electric (Both Transmission and Distribution)
- Nipsco Gas (Buried Gas Main in Some Areas)
- Town of Syracuse (Water/Wastewater Facilities along Kern Road and CR 1200N)
- Coordination will be continued as conceptual alternatives are developed to ensure minimal impact to existing facilities
- ◆ Roadway Design
 - Development of conceptual alignments underway
- Upcoming Items/Next Steps
 - ◆ Site visit will be performed and additional information regarding existing right-of-way, utilities, environmental concerns, or other items potentially impacting trail design will be documented
 - ◆ Conceptual alignments will be developed and provided to internal design groups to further review/refine for utility/right-of-way/environmental impacts
 - ◆ Conceptual displays will be developed for initial presentation to Trail Board at next update meeting, based on research/findings to-date
 - ◆ Preparation of draft feasibility study will begin
- Community Input/Other Feedback
 - ◆ Section 1: Concerns along CR 1200 N including:
 - Impacts to septic system and trees
 - High traffic along CR 1200N (safety of users)
 - Safety at Crazy Corners intersection
 - **Suggestions include evaluating traveling through Fox Run subdivision and avoiding CR 1200N**
 - ◆ **Other feedback/concern points at this point?**
- Next Project Update: **Monday, June 21st, 2021**

Monthly Update Meeting Agenda

Syracuse-Wawasee Trail Study:
Multiple Trail Segments in Syracuse
and Surrounding Wawasee Area

July 19th, 2021 @ 5:00 p.m.

- New Team Member Introduction:
 - ◆ Cory Daly, PLA – Planning and Landscape Architecture Manager
- Project Updates/Milestones
 - ◆ Environmental
 - Environmental Displays Refined
 - Wetland Areas Overlaid on Conceptual Trail Alignments to Evaluate Impacts
 - Preparation of Environmental Preliminary Engineering Fees Underway
 - ◆ Right-of-Way
 - Existing Right-of-Way Verified Along Conceptual Trail Alignments
 - Parcel Impacts and Right-of-Way Acquisition Cost Estimate Development Underway
 - Preparation of Right-of-Way Preliminary Engineering Fees Underway
 - ◆ Utility Coordination
 - Conflict Analysis of Conceptual Trail Alignments Underway
 - Preliminary Cost Estimation of Anticipated Utility Conflicts Underway
 - Preparation of Utility Coordination Preliminary Engineering Fees Underway
 - ◆ Roadway Design
 - Conceptual Alignment Displays Updated with Latest Aerial Information
 - Conflict Analysis Ongoing with Utility Coordination to Adjust Conceptual Alignments to Minimize Impacts
 - Preliminary Cost Estimates Developed Per Section and Conceptual Alignment (Table provided on following page)
 - Conceptual Alignment Detail Discussion and Questions
 - Discussion of Report Outline and Positioning for Next Level Trails Funding

- Upcoming Items/Next Steps
 - ◆ Promotional Materials for Annual Fundraiser on July 29th.
 - ◆ Draft feasibility study development will continue.
 - Draft Report Submission **Monday, September 13th, 2021**
 - Final Report Submission **Monday, September 27th, 2021**
- Community Input/Other Feedback
- Next Project Update: **Monday, August 16th, 2021**

Preliminary Construction Cost Estimates	
<i>Section 1</i>	
Kern Road	\$371,500.00
Kern Road – Alt	\$276,500.00
Chicago Street	\$344,000.00
CR 1200N	\$419,500.00
Syracuse-Webster	\$50,500.00
<i>Section 1 Total (No Alt):</i>	<i>\$1,185,500.00</i>
<i>Section 1 Total (W/ Alt):</i>	<i>\$1,090,500.00</i>
<i>Section 2</i>	
Grandpark Connection	\$176,000.00
Waco Drive	\$18,000.00
Southshore Drive	\$190,000.00
Vawter Park	\$12,500.00
CR 800E	\$305,000.00
CR 1000N	\$164,000.00
Hatchery Rd	\$20,000.00
<i>Section 2 Total:</i>	<i>\$885,500.00</i>
<i>Section 3</i>	
Turkey Creek	\$26,500.00
Wawasee Rd	\$635,000.00
CR 1250N	\$463,500.00
CR 1250N – Alt	\$388,000.00
Bishop Rd	\$116,500.00
<i>Section 3 Total (No Alt):</i>	<i>\$1,241,500.00</i>
<i>Section 3 Total (W/ Alt):</i>	<i>\$1,049,500.00</i>

Notes:

CR 1250N – Alt cost estimate assumes conventional construction can be achieved. Wetland limits are close to alignment, but formal delineation will be necessary to determine impacts and constructability. Cost estimate will increase if boardwalk is necessary.

Monthly Update Meeting Agenda

Syracuse-Wawasee Trail Study:
Multiple Trail Segments in Syracuse
and Surrounding Wawasee Area

August 16th, 2021 @ 5:00 p.m.

- Project Updates/Milestones
 - ◆ Environmental/Right-of-Way/Utility Coordination
 - Continued Preparation of Preliminary Engineering Fees
 - Continued Development of Potential Mitigation/Relocation/Acquisition Costs
 - ◆ Roadway Design
 - Continued Conceptual Alignment Adjustments and Display/Rendering Development
 - Continued Refining Preliminary Cost Estimates
 - Developed Widening Alternatives
 - Discussion of Report Outline and Positioning for Next Level Trails Funding
 - Segment Prioritization and Funding Match Discussion
- Upcoming Items/Next Steps
 - ◆ Draft feasibility study development will continue.
 - Draft Report Submission **Monday, September 13th, 2021**
 - Final Report Submission **Monday, September 27th, 2021**
- Community Input/Other Feedback
- Next Project Update: **Monday, September 20th, 2021**